

**2ND STREET WIDENING  
BONDURANT, IOWA**

**BID DATE: TUESDAY, February 25, 2025 @ 2:00 P.M.**

**PLACE FOR CONTRACTORS  
TO SUBMIT BIDS**

Bondurant City Hall  
Attn: City Clerk  
200 2<sup>nd</sup> Street NW  
Bondurant, IA 50035

**ADDENDUM NO.2**  
February 13, 2025

**TO ALL PLANHOLDERS:**

The following changes, clarifications, additions, and/or deletions are hereby made a part of the contract documents for the above-referenced project, as fully and completely as if the same were fully set forth therein. All Bidders submitting a Bid on the above Contract shall carefully read this Addendum and give it consideration in the preparation of their Bid.

This Addendum No. 2 consists of the following:

- Addendum No. 2 pages ADN1-1 through ADN1-2
- Proposal – Addendum 2 (7 pages)
- Contract – Addendum 2 (10 pages)
- Plan Sheets (8 pages)

**SPECIFICATIONS**



1. **REFER TO PROPOSAL (7 PAGES)**
  - a. **REPLACE PROPOSAL** pages with PROPOSAL-ADDENDUM #2 pages attached to this addendum. Highlighted items have been changed or added.
2. **REFER TO CONTRACT (10 PAGES)**
  - a. **REPLACE CONTRACT** pages with CONTRACT-ADDENDUM #2 pages attached to this addendum. Highlighted items have been changed or added.

**PLANS**


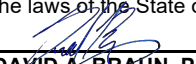
1. **REFER TO PLAN SHEETS (8 PAGES)**
  - a. **REPLACE** Sheets C.01 with the attached – Add bid items A-13-2 and B-13-2 STORM SEWER, TRENCHED, RCP, 15"; Change bid items A-44 and B-44 to STORM SEWER INTAKE, SW-513, 6'x4'; Remove bid items A-45 and B-45; Adjust quantities as noted.
  - b. **REPLACE** Sheets C.02-C.04 with the attached – Revisions to bid item notes as indicated.
  - c. **REPLACE** Sheet C.05 with the attached – Adjust quantities as noted; Tabulation for SUBDRAIN AND CLEANOUTS revised.

- d. **REPLACE** Sheet M.02 with the attached – Add subdrain cleanout; Adjust storm sewer removal quantities as indicated.
- e. **REPLACE** Sheet M.03 with the attached – Adjust storm sewer removal quantities as indicated.

All bidders shall acknowledge receipt and acceptance of Addendum No. 2 by signing in the space provided on the Bid Form. Bids submitted without Addendum No. 2 being acknowledged will be considered non-responsive.

	I hereby certify that this engineering document was prepared by me or under my direct personal supervision and that I am a duly licensed Professional Engineer under the laws of the State of Iowa. 
	Date: <u>02/13/24</u> <b>BRANDON L. MICKELSON, P.E.</b> License No. <b>2442528</b> My renewal date is <b>December 31, 2025.</b> Pages or sheets covered by this seal: <b>Addendum #2</b>

BRANDON MICKELSON, PE  
HR GREEN, INC.  
8710 EARHART LANE  
CEDAR RAPIDS, IOWA 52404  
PHONE: (319) 841-4144  
[brandon.mickelson@hrgreen.com](mailto:brandon.mickelson@hrgreen.com)

	I hereby certify that this engineering document was prepared by me or under my direct personal supervision and that I am a duly licensed Professional Engineer under the laws of the State of Iowa. 
	Date: <u>02/13/2025</u> <b>DAVID A. BRAUN, P.E.</b> License No. <b>28855</b> My renewal date is <b>December 31, 2025.</b> Pages or sheets covered by this seal: <b>Addendum No. 2</b>

DAVID BRAUN, PE  
HR GREEN, INC.  
5525 MERLE HAY ROAD, SUITE 200  
JOHNSTON, IA 50131  
PHONE: (515) 657-5280  
[dbraun@hrgreen.com](mailto:dbraun@hrgreen.com)

**END OF ADDENDUM NO. 2**

**PROPOSAL**

**2ND STREET WIDENING  
BONDURANT, IOWA**

**PROPOSAL ATTACHMENT: PART C – BID ITEMS, QUANTITIES AND PRICES**

This is a UNIT BID PRICE CONTRACT. The bidder must provide the Unit Bid Price, the Total Bid Price, and the Total Construction Cost; in case of discrepancy, the Unit Bid Price governs. The quantities shown on the Proposal Attachment: Part C – Bid Items, Quantities and Prices are approximately only, but are considered sufficiently adequate for the purpose of comparing bids. The Jurisdiction shall only use the Total Construction Cost for comparison of bids.

**The bidder may submit a bid for one or both options A and B. [Lowest of Option A (PCC) or Option B (HMA)] + Alternate 1 = Total Bid. The contract shall be awarded based upon the Total Bid amount. The City of Bondurant reserves the right to not proceed with Alternate 1 and only proceed with base Option A or Option B.**

ITEM NO.		UNIT	QUANTITY	UNIT PRICE	TOTAL
<b>OPTION A - PCC</b>					
A-1	CLEARING AND GRUBBING	UNIT	66	\$	\$
A-2	TOPSOIL OFF-SITE, 8"	CY	2116	\$	\$
A-3	EXCAVATION, CLASS 10	CY	5770	\$	\$
A-4	BELOW GRADE EXCAVATION (CORE OUT)	CY	50	\$	\$
A-5	SUBGRADE PREPARATION	SY	11972	\$	\$
A-6	SUBGRADE TREATMENT, 6% CEMENT	TON	304	\$	\$
A-7	SUBBASE, MODIFIED 4"	SY	1777	\$	\$
A-8	SUBBASE, MODIFIED 6"	SY	13369	\$	\$
A-9	COMPACTION TESTING	LS	1	\$	\$
A-10	EXPLORATORY EXCAVATION	HR	4	\$	\$
A-11	TRENCH COMPACTION TESTING	LS	1	\$	\$
A-12	STORM SEWER, TRENCHED, HDPE, 15"	LF	567	\$	\$
A-13	STORM SEWER, TRENCHED, HDPE, 18"	LF	215	\$	\$
A-13-2	STORM SEWER, TRENCHED, RCP, 15"	LF	53	\$	\$
A-14	STORM SEWER, TRENCHED, RCP, 24"	LF	90	\$	\$
A-15	STORM SEWER, TRENCHED, RCP, 48"	LF	607	\$	\$
A-16	REMOVAL OF STORM SEWER, CMP, 15"	LF	28	\$	\$
A-17	REMOVAL OF STORM SEWER, RCP, 15"	LF	256	\$	\$
A-18	REMOVAL OF STORM SEWER, CMP, 18"	LF	230	\$	\$

ITEM NO.		UNIT	QUANTITY	UNIT PRICE	TOTAL
A-19	REMOVAL OF STORM SEWER, CMP, 24"	LF	26	\$	\$
A-20	REMOVAL OF STORM SEWER, CMP, 30"	LF	10	\$	\$
A-21	REMOVAL OF STORM SEWER, RCP, 30"	LF	145	\$	\$
A-22	PLUG OF EXISTING STORM SEWER CONNECTION, 18"	EA	1	\$	\$
A-23	PIPE CULVERT, CMP, 30"	LF	7	\$	\$
A-24	PIPE APRONS, RCP, 15"	EA	2	\$	\$
A-25	PIPE APRONS, RCP, 24"	EA	1	\$	\$
A-26	PIPE APRONS AND APRON GUARDS, CMP, 30"	EA	2	\$	\$
A-27	FOOTINGS FOR APRONS	EA	3	\$	\$
A-28	PIPE APRON GUARD, 15"	EA	2	\$	\$
A-29	PIPE APRON GUARD, 24"	EA	1	\$	\$
A-30	SUBDRAIN, CASE B, TYPE 1, PVC, 6"	LF	2770	\$	\$
A-31	SUBDRAIN CLEANOUT, TYPE A-1, PVC, 6"	EA	5	\$	\$
A-32	SUBDRAIN OUTLETS AND CONNECTIONS, PVC, 6"	EA	12	\$	\$
A-33	WATER MAIN, TRENCHED, PVC, 8"	LF	27	\$	\$
A-34	WATER MAIN, TRENCHED, PVC, 12"	LF	15	\$	\$
A-35	WATER MAIN, TRENCHLESS, PVC, 12"	LF	110	\$	\$
A-36	FITTINGS, DUCTILE IRON, MECHANICAL JOINT, BY WEIGHT	LB	912	\$	\$
A-37	WATER MAIN REMOVAL, 8"	LF	27	\$	\$
A-38	VALVE, GATE, 12"	EA	1	\$	\$
A-39	FIRE HYDRANT ASSEMBLY	EA	1	\$	\$
A-40	VALVE BOX EXTENSION	EA	3	\$	\$
A-41	FIRE HYDRANT ADJUSTMENT	EA	1	\$	\$
A-42	STORM SEWER INTAKE, SW-505	EA	6	\$	\$
A-43	STORM SEWER INTAKE, SW-506, MODIFIED	EA	6	\$	\$
A-44	STORM SEWER INTAKE, SW-513, 6'x4'	EA	1	\$	\$
A-45	STORM SEWER INTAKE, SW-512, TYPE 2, 36"	EA	4	\$ ---	\$ ---
A-46	MANHOLE ADJUSTMENT, MINOR	EA	1	\$	\$
A-47	CONNECTION TO EXISTING 8'X8' RCB	EA	2	\$	\$
A-48	PAVEMENT, PCC, 7"	SY	399	\$	\$
A-49	PAVEMENT, PCC, 9"	SY	7656	\$	\$

ITEM NO.		UNIT	QUANTITY	UNIT PRICE	TOTAL
A-50	TEMPORARY PCC/HMA PAVEMENT, 7"	SY	659	\$	\$
A-51	CONCRETE MEDIAN, 6"	SY	14	\$	\$
A-52	PCC PAVEMENT SAMPLES AND TESTING	LS	1	\$	\$
A-53	PAVEMENT, HMA, 10", HIGH TRAFFIC, PG 58-28H	SY	2853	\$	\$
A-54	HMA PAVEMENT SAMPLES AND TESTING	LS	1	\$	\$
A-55	REMOVAL OF SIDEWALK	SY	114	\$	\$
A-56	REMOVAL OF DRIVEWAY	SY	505	\$	\$
A-57	REMOVAL OF CURB	LF	125	\$	\$
A-58	SHARED USE PATH, PCC 6"	SY	1488	\$	\$
A-59	SIDEWALK, PCC, 4"	SY	299	\$	\$
A-60	SIDEWALK, PCC, 6"	SY	109	\$	\$
A-61	DETECTABLE WARNING	SF	270	\$	\$
A-62	DRIVEWAY, PAVED, PCC, 7"	SY	568	\$	\$
A-63	DRIVEWAY, GRANULAR, CLASS A CRUSHED STONE	TON	10	\$	\$
A-64	PAVEMENT REMOVAL	SY	7588	\$	\$
A-65	GRANULAR SHOULDERS, TYPE B	TON	472	\$	\$
A-66	PAINTED PAVEMENT MARKINGS, DURABLE	STA	70	\$	\$
A-67	PAINTED SYMBOLS AND LEGENDS, DURABLE	EA	10	\$	\$
A-68	GROOVES CUT FOR PAVEMENT MARKINGS	STA	52	\$	\$
A-69	GROOVES CUT FOR SYMBOLS AND LEGENDS	EA	10	\$	\$
A-70	TEMPORARY TRAFFIC CONTROL	LS	1	\$	\$
A-71	REMOVE AND SALVAGE TRAFFIC SIGN ASSEMBLY	EA	11	\$	\$
A-72	CONVENTIONAL SEEDING, FERTILIZING, AND MULCHING, TYPE 1	AC	3	\$	\$
A-73	WARRANTY	LS	1	\$	\$
A-74	SWPPP PREPARATION	LS	1	\$	\$
A-75	SWPPP MANAGEMENT	LS	1	\$	\$
A-76	TEMPORARY ROLLED CONTROL PRODUCT, TYPE 2D	SY	61	\$	\$
A-77	WATTLE, 9"	LF	1100	\$	\$
A-78	WATTLE, REMOVAL	LF	1100	\$	\$
A-79	SILT FENCE, INSTALLATION	LF	4800	\$	\$
A-80	SILT FENCE, REMOVAL OF SEDIMENT	LF	4800	\$	\$
A-81	SILT FENCE, REMOVAL OF DEVICE	LA	4800	\$	\$
A-82	INLET PROTECTION DEVICE, INSTALLATION, DROP-IN	EA	24	\$	\$
A-83	INLET PROTECTION DEVICE INSTALLATION, SURFACE-APPLIED	EA	4	\$	\$

ITEM NO.		UNIT	QUANTITY	UNIT PRICE	TOTAL
A-84	INLET PROTECTION DEVICE, MAINTENANCE	EA	28	\$	\$
A-85	REVTMENT, CLASS E	TON	15	\$	\$
A-86	SAFETY RAIL, POWDER COATED BLACK	LF	100	\$	\$
A-87	CONSTRUCTION SURVEY	LS	1	\$	\$
A-88	MOBILIZATION	LS	1	\$	\$
A-89	CONCRETE WASHOUT	EA	1	\$	\$
A-90	RECTANGULAR RAPID FLASHING BEACON (RRFB) - 2 POSTS PER LOCATION	EA	1	\$	\$
A-91	SOLAR POWERED SPEED FEEDBACK SIGN	EA	1	\$	\$
<b>TOTAL ITEMS A-1 TO A-91 (OPTION A – PCC)</b>					<b>\$</b>
<b>OPTION B - HMA</b>					
B-1	CLEARING AND GRUBBING	UNIT	66	\$	\$
B-2	TOPSOIL OFF-SITE, 8"	CY	2116	\$	\$
B-3	EXCAVATION, CLASS 10	CY	6009	\$	\$
B-4	BELOW GRADE EXCAVATION (CORE OUT)	CY	50	\$	\$
B-5	SUBGRADE PREPARATION	SY	11972	\$	\$
B-6	SUBGRADE TREATMENT, 6% CEMENT	TON	304	\$	\$
B-7	SUBBASE, MODIFIED 4"	SY	1777	\$	\$
B-8	SUBBASE, MODIFIED 6"	SY	13369	\$	\$
B-9	COMPACTION TESTING	LS	1	\$	\$
B-10	EXPLORATORY EXCAVATION	HR	4	\$	\$
B-11	TRENCH COMPACTION TESTING	LS	1	\$	\$
B-12	STORM SEWER, TRENCHED, HDPE, 15"	LF	567	\$	\$
B-13	STORM SEWER, TRENCHED, HDPE, 18"	LF	215	\$	\$
B-13-2	STORM SEWER, TRENCHED, RCP, 15"	LF	53	\$	\$
B-14	STORM SEWER, TRENCHED, RCP, 24"	LF	90	\$	\$
B-15	STORM SEWER, TRENCHED, RCP, 48"	LF	607	\$	\$
B-16	REMOVAL OF STORM SEWER, CMP, 15"	LF	28	\$	\$
B-17	REMOVAL OF STORM SEWER, RCP, 15"	LF	256	\$	\$
B-18	REMOVAL OF STORM SEWER, CMP, 18"	LF	230	\$	\$
B-19	REMOVAL OF STORM SEWER, CMP, 24"	LF	26	\$	\$
B-20	REMOVAL OF STORM SEWER, CMP, 30"	LF	10	\$	\$
B-21	REMOVAL OF STORM SEWER, RCP, 30"	LF	145	\$	\$
B-22	PLUG OF EXISTING STORM SEWER CONNECTION, 18"	EA	1	\$	\$

ITEM NO.		UNIT	QUANTITY	UNIT PRICE	TOTAL
B-23	PIPE CULVERT, CMP, 30"	LF	7	\$	\$
B-24	PIPE APRONS, RCP, 15"	EA	2	\$	\$
B-25	PIPE APRONS, RCP, 24"	EA	1	\$	\$
B-26	PIPE APRONS AND APRON GUARDS, CMP, 30"	EA	2	\$	\$
B-27	FOOTINGS FOR APRONS	EA	3	\$	\$
B-28	PIPE APRON GUARD, 15"	EA	2	\$	\$
B-29	PIPE APRON GUARD, 24"	EA	1	\$	\$
B-30	SUBDRAIN, CASE B, TYPE 1, PVC, 6"	LF	2770	\$	\$
B-31	SUBDRAIN CLEANOUT, TYPE A-1, PVC, 6"	EA	5	\$	\$
B-32	SUBDRAIN OUTLETS AND CONNECTIONS, PVC, 6"	EA	12	\$	\$
B-33	WATER MAIN, TRENCHED, PVC, 8"	LF	27	\$	\$
B-34	WATER MAIN, TRENCHED, PVC, 12"	LF	15	\$	\$
B-35	WATER MAIN, TRENCHLESS, PVC, 12"	LF	110	\$	\$
B-36	FITTINGS, DUCTILE IRON, MECHANICAL JOINT, BY WEIGHT	LB	912	\$	\$
B-37	WATER MAIN REMOVAL, 8"	LF	27	\$	\$
B-38	VALVE, GATE, 12"	EA	1	\$	\$
B-39	FIRE HYDRANT ASSEMBLY	EA	1	\$	\$
B-40	VALVE BOX EXTENSION	EA	3	\$	\$
B-41	FIRE HYDRANT ADJUSTMENT	EA	1	\$	\$
B-42	STORM SEWER INTAKE, SW-505	EA	6	\$	\$
B-43	STORM SEWER INTAKE, SW-506, MODIFIED	EA	6	\$	\$
B-44	STORM SEWER INTAKE, SW-513, 6"x4'	EA	1	\$	\$
B-45	STORM SEWER INTAKE, SW-512, TYPE 2, 36"	EA	4	\$ ---	\$ ---
B-46	MANHOLE ADJUSTMENT, MINOR	EA	1	\$	\$
B-47	CONNECTION TO EXISTING 8'X8' RCB	EA	2	\$	\$
B-48	PAVEMENT, PCC, 7"	SY	399	\$	\$
B-49	TEMPORARY PCC/HMA PAVEMENT, 7"	SY	659	\$	\$
B-50	CURB AND GUTTER, 10" THICK, 30" WIDE	LF	3067	\$	\$
B-51	CONCRETE MEDIAN, 6"	SY	14	\$	\$
B-52	PCC PAVEMENT SAMPLES AND TESTING	LS	1	\$	\$
B-53	PAVEMENT, HMA, 10", HIGH TRAFFIC, PG 58-28H	SY	9656	\$	\$
B-54	HMA PAVEMENT SAMPLES AND TESTING	LS	1	\$	\$
B-55	REMOVAL OF SIDEWALK	SY	114	\$	\$
B-56	REMOVAL OF DRIVEWAY	SY	505	\$	\$
B-57	REMOVAL OF CURB	LF	125	\$	\$

ITEM NO.		UNIT	QUANTITY	UNIT PRICE	TOTAL
B-58	SHARED USE PATH, PCC, 6"	SY	1488	\$	\$
B-59	SIDEWALK, PCC, 4"	SY	299	\$	\$
B-60	SIDEWALK, PCC, 6"	SY	109	\$	\$
B-61	DETECTABLE WARNING	SF	270	\$	\$
B-62	DRIVEWAY, PAVED, PCC, 7"	SY	568	\$	\$
B-63	DRIVEWAY, GRANULAR, CLASS A CRUSHED STONE	TON	10	\$	\$
B-64	PAVEMENT REMOVAL	SY	7588	\$	\$
B-65	GRANULAR SHOULDERS, TYPE B	TON	472	\$	\$
B-66	PAINTED PAVEMENT MARKINGS, WATERBORNE	STA	70	\$	\$
B-67	PAINTED SYMBOLS AND LEGENDS, WATERBORNE	EA	10	\$	\$
B-68	GROOVES CUT FOR PAVEMENT MARKINGS	STA	52	\$	\$
B-69	GROOVES CUT FOR SYMBOLS AND LEGENDS	EA	10	\$	\$
B-70	TEMPORARY TRAFFIC CONTROL	LS	1	\$	\$
B-71	REMOVE AND SALVAGE TRAFFIC SIGN ASSEMBLY	EA	11	\$	\$
B-72	CONVENTIONAL SEEDING, FERTILIZING, AND MULCHING, TYPE 1	AC	3	\$	\$
B-73	WARRANTY	LS	1	\$	\$
B-74	SWPPP PREPARATION	LS	1	\$	\$
B-75	SWPPP MANAGEMENT	LS	1	\$	\$
B-76	TEMPORARY ROLLED EROSION CONTROL PRODUCT, TYPE 2D	SY	61	\$	\$
B-77	WATTLE, 9"	LF	1100	\$	\$
B-78	WATTLE, REMOVAL	LF	1100	\$	\$
B-79	SILT FENCE, INSTALLATION	LF	4800	\$	\$
B-80	SILT FENCE, REMOVAL OF SEDIMENT	LF	4800	\$	\$
B-81	SILT FENCE, REMOVAL OF DEVICE	LA	4800	\$	\$
B-82	INLET PROTECTION DEVICE, INSTALLATION, DROP-IN	EA	24	\$	\$
B-83	INLET PROTECTION DEVICE, INSTALLATION, SURFACE-APPLIED	EA	4	\$	\$
B-84	INLET PROTECTION DEVICE, MAINTENANCE	EA	28	\$	\$
B-85	REVETMENT, CLASS E	TON	15	\$	\$
B-86	SAFETY RAIL, POWDER COATED BLACK	LF	100	\$	\$
B-87	CONSTRUCTION SURVEY	LS	1	\$	\$
B-88	MOBILIZATION	LS	1	\$	\$
B-89	CONCRETE WASHOUT	LS	1	\$	\$
B-90	RECTANGULAR RAPID FLASHING BEACON (RRFB) - 2 POSTS PER LOCATION	EA	1	\$	\$



ITEM NO.		UNIT	QUANTITY	UNIT PRICE	TOTAL
B-91	SOLAR POWERED SPEED FEEDBACK SIGN	EA	1	\$	\$
<b>TOTAL ITEMS B-1 TO B-91 (OPTION B – HMA)</b>					\$
<b>ALTERNATE 1</b>					
C-1	SUBBASE, MODIFIED 6"	SY	57	\$	\$
C-2	TEMPORARY PCC/HMA PAVEMENT, 7"	SY	45		
C-3	TEMPORARY TRAFFIC CONTROL	LS	1		
C-4	TEMPORARY TRAFFIC SIGNALS	EA	8		
C-5	END OF SEASON TEMPORARY EROSION CONTROL	AC	1		
C-6	MOBILIZATION	LS	1		
<b>TOTAL ITEMS C-1 TO C-6 (ALTERNATE 1)</b>					\$

Option A Sub Total (Bid Items A-1 to A-91) \$ \_\_\_\_\_

Option B Sub Total (Bid Items B-1 to B-91) \$ \_\_\_\_\_

Alternate 1 Sub Total (Bid Items C-1 to C-6) \$ \_\_\_\_\_

Total Bid = (Lowest of Option A or Option B) + Alternate 1 \$ \_\_\_\_\_

NOTE: IT IS UNDERSTOOD THAT THE ABOVE QUANTITIES ARE ESTIMATED FOR THE PURPOSE OF THIS BID. ALL QUANTITIES ARE SUBJECT TO REVISION BY THE CITY. QUANTITY CHANGES WHICH AMOUNT TO TWENTY (20) PERCENT OR LESS OF THE TOTAL BID SHALL NOT AFFECT THE UNIT PRICE BID.

\_\_\_\_\_  
Bidder

**CONTRACT**

**2ND STREET WIDENING  
BONDURANT, IOWA**

THIS CONTRACT, made and entered into this \_\_\_\_\_ day of \_\_\_\_\_, 2025, by and between the City of Bondurant, Iowa by its Mayor, upon order of its City Council hereinafter called the "Jurisdiction", and Contractor, hereinafter called the "Contractor".

**WITNESSETH:**

The Contractor hereby agrees to complete the work comprising the below referenced improvement as specified in the contract documents, which are officially on file with the Jurisdiction, in the office of the City Clerk. This contract includes all contract documents. The work under this contract shall be constructed in accordance with the 2024 Edition of the Urban Standard Specifications for Public Improvements, as further modified by the supplemental specifications and special provisions included in said contract documents, and the Contract Attachment, which is attached hereto. The Contractor further agrees to complete the work in strict accordance with said contract documents, and guarantee the work as required by law, for the time required in said contract documents, after its acceptance by the Jurisdiction.

This contract is awarded and executed for completion of the work specified in the contract documents for the bid prices shown on the Contract Attachment: Bid Items, Quantities and Prices which were proposed by the Contractor in its proposal submitted in accordance with Notice to Bidders and Notice of Public Hearing for the following described improvements:

This project includes all materials, equipment, transportation and labor necessary for the reconstruction and widening of 2nd Street NW from Franklin Street to Fireside Drive. Base Bid project items include 9" thick PCC pavement (Option A) or 10" thick HMA pavement (Option B), dependant on option bid and selected. Other items include water main, storm sewer, sidewalk, driveways, traffic control, restoration, and associated work. Alternate 1 project items include additional project staging, traffic control, temporary traffic signals, extended completion dates and associated work to maintain traffic on 2nd Street NW. Specific project location along with the kind and approximate quantity of materials to be used shall be as set forth in the Plans and Specifications.

The Contractor agrees to perform said work for and in consideration of the Jurisdiction's payment of the bid amount of `WrittenContractAmount` dollars (`$ContractNumericAmount`), which amount shall constitute the required amount of the performance, maintenance, and payment bond. The Contractor hereby agrees to commence work under this contract within 10 days of the date specified on the Notice to Proceed, work shall be substantially complete on or before Base Bid: September 1, 2025; Alternate 1: November 1, 2025, and shall be fully completed on or before Base Bid: October 1, 2025; Alternate 1: December 1, 2025, and to pay liquidated damages for noncompliance with said completion provisions at a rate of One Thousand & 00/100 Dollars (\$1,000.00) dollars for each calendar day that the work remains incomplete.

HR Green, Inc.  
Project No. 2403363

2nd Street Widening  
Bondurant, Iowa  
ADDENDUM #2

IN WITNESS WHEREOF, the Parties hereto have executed this instrument, in triplicate on the date first shown written.

JURISDICTION: City of Bondurant, Iowa

CONTRACTOR:

By \_\_\_\_\_  
Doug Elrod, Mayor

Contractor

(Seal)  
ATTEST:

By \_\_\_\_\_  
CAuthorizedSignature, CAuthorizedTitle

\_\_\_\_\_  
Marketa Oliver, City Administrator

\_\_\_\_\_  
Print Name, Title

\_\_\_\_\_  
CAddress1  
Street Address

\_\_\_\_\_  
CAddress2  
City, State, Zip Code

\_\_\_\_\_  
CPhone  
Telephone

CONTRACTOR PUBLIC REGISTRATION INFORMATION To Be Provided By:

1. All Contractors: The Contractor shall enter its Public Registration No. \_\_\_\_\_ issued by the Iowa Commissioner of Labor pursuant to Section 91C.5 of the Iowa Code.
2. Out-of-State Contractors:
  - A. Pursuant to Section 91C.7 of the Iowa Code, an out-of-state contractor, before commencing a contract in excess of five thousand dollars in value in Iowa, shall file a bond with the division of labor services of the department of workforce development. The contractor should contact 515-242-5871 for further information. Prior to contract execution, the Engineer may forward a copy of this contract to the Iowa Department of Workforce Development as notification of pending construction work. It is the contractor's responsibility to comply with said Section 91C.7 before commencing this work.

HR Green, Inc.  
Project No. 2403363

2nd Street Widening  
Bondurant, Iowa  
ADDENDUM #2

- B. Prior to entering into contract, the designated low bidder, if it be a corporation organized under the laws of a state other than Iowa, shall file with the Jurisdictional Engineer a certificate from the Secretary of the State of Iowa showing that it has complied with all the provisions of Chapter 490 of the Code of Iowa, or as amended, governing foreign corporations. For further information contact the Iowa Secretary of State Office at 515-281-5204.

Bond No. \_\_\_\_\_  
Name of Surety \_\_\_\_\_

**NOTE: All signatures on this contract must be original signatures in ink; copies or facsimile of any signature will not be accepted.**

**CORPORATE ACKNOWLEDGMENT**

State of \_\_\_\_\_ )  
\_\_\_\_\_ ) SS  
\_\_\_\_\_ County)

On this \_\_\_\_ day of \_\_\_\_\_, 20\_\_\_\_, before me, the undersigned, a Notary Public in and for the State of \_\_\_\_\_, personally appeared \_\_\_\_\_ and \_\_\_\_\_, to me known, who, being by me duly sworn, did say that they are the \_\_\_\_\_, and \_\_\_\_\_, respectively, of the corporation executing the foregoing instrument; that (no seal has been procured by) (the seal affixed thereto is the seal of) the corporation; that said instrument was signed (and sealed) on behalf of the corporation by authority of this Board of Directors; that \_\_\_\_\_ and \_\_\_\_\_ acknowledged the execution of the instrument to be the voluntary act and deed of the corporation, by it and by them voluntarily executed.

\_\_\_\_\_  
Notary Public in and for the State of \_\_\_\_\_  
My commission expires \_\_\_\_\_, 20 \_\_\_\_\_

**CONTRACT ATTACHMENT: ITEM 1: GENERAL - None**

**CONTRACT ATTACHMENT: ITEM 2: BID ITEMS, QUANTITIES**

THIS CONTRACT IS AWARDED AND EXECUTED FOR COMPLETION OF THE WORK SPECIFIED IN THE CONTRACT DOCUMENTS FOR THE BID PRICES TABULATED BELOW AS PROPOSED BY THE CONTRACTOR IN ITS PROPOSAL SUBMITTED IN ACCORDANCE WITH NOTICE TO BIDDERS AND NOTICE OF PUBLIC HEARING. ALL QUANTITIES ARE SUBJECT TO REVISION BY THE JURISDICTION. BASED ON BIDS RECEIVED, THE CITY RESERVES THE RIGHT TO ADJUST QUANTITIES AS NECESSARY TO MAXIMIZE FUNDS BUDGETED FOR THIS PROJECT.

ITEM NO.		UNIT	QUANTITY	UNIT PRICE	TOTAL
<b>OPTION A - PCC</b>					
A-1	CLEARING AND GRUBBING	UNIT	66	\$	\$
A-2	TOPSOIL OFF-SITE, 8"	CY	2116	\$	\$
A-3	EXCAVATION, CLASS 10	CY	5770	\$	\$
A-4	BELOW GRADE EXCAVATION (CORE OUT)	CY	50	\$	\$
A-5	SUBGRADE PREPARATION	SY	11972	\$	\$
A-6	SUBGRADE TREATMENT, 6% CEMENT	TON	304	\$	\$
A-7	SUBBASE, MODIFIED 4"	SY	1777	\$	\$
A-8	SUBBASE, MODIFIED 6"	SY	13369	\$	\$
A-9	COMPACTION TESTING	LS	1	\$	\$
A-10	EXPLORATORY EXCAVATION	HR	4	\$	\$
A-11	TRENCH COMPACTION TESTING	LS	1	\$	\$
A-12	STORM SEWER, TRENCHED, HDPE, 15"	LF	567	\$	\$
A-13	STORM SEWER, TRENCHED, HDPE, 18"	LF	215	\$	\$
A-13-2	STORM SEWER, TRENCHED, RCP, 15"	LF	53	\$	\$
A-14	STORM SEWER, TRENCHED, RCP, 24"	LF	90	\$	\$
A-15	STORM SEWER, TRENCHED, RCP, 48"	LF	607	\$	\$
A-16	REMOVAL OF STORM SEWER, CMP, 15"	LF	28	\$	\$
A-17	REMOVAL OF STORM SEWER, RCP, 15"	LF	256	\$	\$
A-18	REMOVAL OF STORM SEWER, CMP, 18"	LF	230	\$	\$
A-19	REMOVAL OF STORM SEWER, CMP, 24"	LF	26	\$	\$
A-20	REMOVAL OF STORM SEWER, CMP, 30"	LF	10	\$	\$
A-21	REMOVAL OF STORM SEWER, RCP, 30"	LF	145	\$	\$
A-22	PLUG OF EXISTING STORM SEWER CONNECTION, 18"	EA	1	\$	\$
A-23	PIPE CULVERT, CMP, 30"	LF	7	\$	\$

ITEM NO.		UNIT	QUANTITY	UNIT PRICE	TOTAL
A-24	PIPE APRONS, RCP, 15"	EA	2	\$	\$
A-25	PIPE APRONS, RCP, 24"	EA	1	\$	\$
A-26	PIPE APRONS AND APRON GUARDS, CMP, 30"	EA	2	\$	\$
A-27	FOOTINGS FOR APRONS	EA	3	\$	\$
A-28	PIPE APRON GUARD, 15"	EA	2	\$	\$
A-29	PIPE APRON GUARD, 24"	EA	1	\$	\$
A-30	SUBDRAIN, CASE B, TYPE 1, PVC, 6"	LF	2770	\$	\$
A-31	SUBDRAIN CLEANOUT, TYPE A-1, PVC, 6"	EA	5	\$	\$
A-32	SUBDRAIN OUTLETS AND CONNECTIONS, PVC, 6"	EA	12	\$	\$
A-33	WATER MAIN, TRENCHED, PVC, 8"	LF	27	\$	\$
A-34	WATER MAIN, TRENCHED, PVC, 12"	LF	15	\$	\$
A-35	WATER MAIN, TRENCHLESS, PVC, 12"	LF	110	\$	\$
A-36	FITTINGS, DUCTILE IRON, MECHANICAL JOINT, BY WEIGHT	LB	912	\$	\$
A-37	WATER MAIN REMOVAL, 8"	LF	27	\$	\$
A-38	VALVE, GATE, 12"	EA	1	\$	\$
A-39	FIRE HYDRANT ASSEMBLY	EA	1	\$	\$
A-40	VALVE BOX EXTENSION	EA	3	\$	\$
A-41	FIRE HYDRANT ADJUSTMENT	EA	1	\$	\$
A-42	STORM SEWER INTAKE, SW-505	EA	6	\$	\$
A-43	STORM SEWER INTAKE, SW-506, MODIFIED	EA	6	\$	\$
A-44	STORM SEWER INTAKE, SW-513, 6'x4'	EA	1	\$	\$
A-45	STORM SEWER INTAKE, SW 512, TYPE 2, 36"	EA	4	\$ ---	\$ ---
A-46	MANHOLE ADJUSTMENT, MINOR	EA	1	\$	\$
A-47	CONNECTION TO EXISTING 8'X8' RCB	EA	2	\$	\$
A-48	PAVEMENT, PCC, 7"	SY	399	\$	\$
A-49	PAVEMENT, PCC, 9"	SY	7656	\$	\$
A-50	TEMPORARY PCC/HMA PAVEMENT, 7"	SY	659	\$	\$
A-51	CONCRETE MEDIAN, 6"	SY	14	\$	\$
A-52	PCC PAVEMENT SAMPLES AND TESTING	LS	1	\$	\$
A-53	PAVEMENT, HMA, 10", HIGH TRAFFIC, PG 58-28H	SY	2853	\$	\$
A-54	HMA PAVEMENT SAMPLES AND TESTING	LS	1	\$	\$
A-55	REMOVAL OF SIDEWALK	SY	114	\$	\$
A-56	REMOVAL OF DRIVEWAY	SY	505	\$	\$

ITEM NO.		UNIT	QUANTITY	UNIT PRICE	TOTAL
A-57	REMOVAL OF CURB	LF	125	\$	\$
A-58	SHARED USE PATH, PCC 6"	SY	1488	\$	\$
A-59	SIDEWALK, PCC, 4"	SY	299	\$	\$
A-60	SIDEWALK, PCC, 6"	SY	109	\$	\$
A-61	DETECTABLE WARNING	SF	270	\$	\$
A-62	DRIVEWAY, PAVED, PCC, 7"	SY	568	\$	\$
A-63	DRIVEWAY, GRANULAR, CLASS A CRUSHED STONE	TON	10	\$	\$
A-64	PAVEMENT REMOVAL	SY	7588	\$	\$
A-65	GRANULAR SHOULDERS, TYPE B	TON	472	\$	\$
A-66	PAINTED PAVEMENT MARKINGS, DURABLE	STA	70	\$	\$
A-67	PAINTED SYMBOLS AND LEGENDS, DURABLE	EA	10	\$	\$
A-68	GROOVES CUT FOR PAVEMENT MARKINGS	STA	52	\$	\$
A-69	GROOVES CUT FOR SYMBOLS AND LEGENDS	EA	10	\$	\$
A-70	TEMPORARY TRAFFIC CONTROL	LS	1	\$	\$
A-71	REMOVE AND SALVAGE TRAFFIC SIGN ASSEMBLY	EA	11	\$	\$
A-72	CONVENTIONAL SEEDING, FERTILIZING, AND MULCHING, TYPE 1	AC	3	\$	\$
A-73	WARRANTY	LS	1	\$	\$
A-74	SWPPP PREPARATION	LS	1	\$	\$
A-75	SWPPP MANAGEMENT	LS	1	\$	\$
A-76	TEMPORARY ROLLED CONTROL PRODUCT, TYPE 2D	SY	61	\$	\$
A-77	WATTLE, 9"	LF	1100	\$	\$
A-78	WATTLE, REMOVAL	LF	1100	\$	\$
A-79	SILT FENCE, INSTALLATION	LF	4800	\$	\$
A-80	SILT FENCE, REMOVAL OF SEDIMENT	LF	4800	\$	\$
A-81	SILT FENCE, REMOVAL OF DEVICE	LA	4800	\$	\$
A-82	INLET PROTECTION DEVICE, INSTALLATION, DROP-IN	EA	24	\$	\$
A-83	INLET PROTECTION DEVICE INSTALLATION, SURFACE-APPLIED	EA	4	\$	\$
A-84	INLET PROTECTION DEVICE, MAINTENANCE	EA	28	\$	\$
A-85	REVTMENT, CLASS E	TON	15	\$	\$
A-86	SAFETY RAIL, POWDER COATED BLACK	LF	100	\$	\$
A-87	CONSTRUCTION SURVEY	LS	1	\$	\$
A-88	MOBILIZATION	LS	1	\$	\$
A-89	CONCRETE WASHOUT	EA	1	\$	\$

ITEM NO.		UNIT	QUANTITY	UNIT PRICE	TOTAL
A-90	RECTANGULAR RAPID FLASHING BEACON (RRFB) - 2 POSTS PER LOCATION	EA	1	\$	\$
A-91	SOLAR POWERED SPEED FEEDBACK SIGN	EA	1	\$	\$
<b>TOTAL ITEMS A-1 TO A-91 (OPTION A – PCC)</b>					<b>\$</b>
<b>OPTION B - HMA</b>					
B-1	CLEARING AND GRUBBING	UNIT	66	\$	\$
B-2	TOPSOIL OFF-SITE, 8"	CY	2116	\$	\$
B-3	EXCAVATION, CLASS 10	CY	6009	\$	\$
B-4	BELOW GRADE EXCAVATION (CORE OUT)	CY	50	\$	\$
B-5	SUBGRADE PREPARATION	SY	11972	\$	\$
B-6	SUBGRADE TREATMENT, 6% CEMENT	TON	304	\$	\$
B-7	SUBBASE, MODIFIED 4"	SY	1777	\$	\$
B-8	SUBBASE, MODIFIED 6"	SY	13369	\$	\$
B-9	COMPACTION TESTING	LS	1	\$	\$
B-10	EXPLORATORY EXCAVATION	HR	4	\$	\$
B-11	TRENCH COMPACTION TESTING	LS	1	\$	\$
B-12	STORM SEWER, TRENCHED, HDPE, 15"	LF	567	\$	\$
B-13	STORM SEWER, TRENCHED, HDPE, 18"	LF	215	\$	\$
B-13-2	STORM SEWER, TRENCHED, RCP, 15"	LF	53	\$	\$
B-14	STORM SEWER, TRENCHED, RCP, 24"	LF	90	\$	\$
B-15	STORM SEWER, TRENCHED, RCP, 48"	LF	607	\$	\$
B-16	REMOVAL OF STORM SEWER, CMP, 15"	LF	28	\$	\$
B-17	REMOVAL OF STORM SEWER, RCP, 15"	LF	256	\$	\$
B-18	REMOVAL OF STORM SEWER, CMP, 18"	LF	230	\$	\$
B-19	REMOVAL OF STORM SEWER, CMP, 24"	LF	26	\$	\$
B-20	REMOVAL OF STORM SEWER, CMP, 30"	LF	10	\$	\$
B-21	REMOVAL OF STORM SEWER, RCP, 30"	LF	145	\$	\$
B-22	PLUG OF EXISTING STORM SEWER CONNECTION, 18"	EA	1	\$	\$
B-23	PIPE CULVERT, CMP, 30"	LF	7	\$	\$
B-24	PIPE APRONS, RCP, 15"	EA	2	\$	\$
B-25	PIPE APRONS, RCP, 24"	EA	1	\$	\$
B-26	PIPE APRONS AND APRON GUARDS, CMP, 30"	EA	2	\$	\$
B-27	FOOTINGS FOR APRONS	EA	3	\$	\$
B-28	PIPE APRON GUARD, 15"	EA	2	\$	\$
B-29	PIPE APRON GUARD, 24"	EA	1	\$	\$
B-30	SUBDRAIN, CASE B, TYPE 1, PVC, 6"	LF	2770	\$	\$



ITEM NO.		UNIT	QUANTITY	UNIT PRICE	TOTAL
B-31	SUBDRAIN CLEANOUT, TYPE A-1, PVC, 6"	EA	5	\$	\$
B-32	SUBDRAIN OUTLETS AND CONNECTIONS, PVC, 6"	EA	12	\$	\$
B-33	WATER MAIN, TRENCHED, PVC, 8"	LF	27	\$	\$
B-34	WATER MAIN, TRENCHED, PVC, 12"	LF	15	\$	\$
B-35	WATER MAIN, TRENCHLESS, PVC, 12"	LF	110	\$	\$
B-36	FITTINGS, DUCTILE IRON, MECHANICAL JOINT, BY WEIGHT	LB	912	\$	\$
B-37	WATER MAIN REMOVAL, 8"	LF	27	\$	\$
B-38	VALVE, GATE, 12"	EA	1	\$	\$
B-39	FIRE HYDRANT ASSEMBLY	EA	1	\$	\$
B-40	VALVE BOX EXTENSION	EA	3	\$	\$
B-41	FIRE HYDRANT ADJUSTMENT	EA	1	\$	\$
B-42	STORM SEWER INTAKE, SW-505	EA	6	\$	\$
B-43	STORM SEWER INTAKE, SW-506, MODIFIED	EA	6	\$	\$
B-44	STORM SEWER INTAKE, SW-513, 6'x4'	EA	1	\$	\$
B-45	STORM SEWER INTAKE, SW-512, TYPE 2, 36"	EA	4	\$ ---	\$ ---
B-46	MANHOLE ADJUSTMENT, MINOR	EA	1	\$	\$
B-47	CONNECTION TO EXISTING 8'X8' RCB	EA	2	\$	\$
B-48	PAVEMENT, PCC, 7"	SY	399	\$	\$
B-49	TEMPORARY PCC/HMA PAVEMENT, 7"	SY	659	\$	\$
B-50	CURB AND GUTTER, 10" THICK, 30" WIDE	LF	3067	\$	\$
B-51	CONCRETE MEDIAN, 6"	SY	14	\$	\$
B-52	PCC PAVEMENT SAMPLES AND TESTING	LS	1	\$	\$
B-53	PAVEMENT, HMA, 10", HIGH TRAFFIC, PG 58-28H	SY	9656	\$	\$
B-54	HMA PAVEMENT SAMPLES AND TESTING	LS	1	\$	\$
B-55	REMOVAL OF SIDEWALK	SY	114	\$	\$
B-56	REMOVAL OF DRIVEWAY	SY	505	\$	\$
B-57	REMOVAL OF CURB	LF	125	\$	\$
B-58	SHARED USE PATH, PCC, 6"	SY	1488	\$	\$
B-59	SIDEWALK, PCC, 4"	SY	299	\$	\$
B-60	SIDEWALK, PCC, 6"	SY	109	\$	\$
B-61	DETECTABLE WARNING	SF	270	\$	\$
B-62	DRIVEWAY, PAVED, PCC, 7"	SY	568	\$	\$
B-63	DRIVEWAY, GRANULAR, CLASS A CRUSHED STONE	TON	10	\$	\$
B-64	PAVEMENT REMOVAL	SY	7588	\$	\$
B-65	GRANULAR SHOULDERS, TYPE B	TON	472	\$	\$

ITEM NO.		UNIT	QUANTITY	UNIT PRICE	TOTAL
B-66	PAINTED PAVEMENT MARKINGS, WATERBORNE	STA	70	\$	\$
B-67	PAINTED SYMBOLS AND LEGENDS, WATERBORNE	EA	10	\$	\$
B-68	GROOVES CUT FOR PAVEMENT MARKINGS	STA	52	\$	\$
B-69	GROOVES CUT FOR SYMBOLS AND LEGENDS	EA	10	\$	\$
B-70	TEMPORARY TRAFFIC CONTROL	LS	1	\$	\$
B-71	REMOVE AND SALVAGE TRAFFIC SIGN ASSEMBLY	EA	11	\$	\$
B-72	CONVENTIONAL SEEDING, FERTILIZING, AND MULCHING, TYPE 1	AC	3	\$	\$
B-73	WARRANTY	LS	1	\$	\$
B-74	SWPPP PREPARATION	LS	1	\$	\$
B-75	SWPPP MANAGEMENT	LS	1	\$	\$
B-76	TEMPORARY ROLLED EROSION CONTROL PRODUCT, TYPE 2D	SY	61	\$	\$
B-77	WATTLE, 9"	LF	1100	\$	\$
B-78	WATTLE, REMOVAL	LF	1100	\$	\$
B-79	SILT FENCE, INSTALLATION	LF	4800	\$	\$
B-80	SILT FENCE, REMOVAL OF SEDIMENT	LF	4800	\$	\$
B-81	SILT FENCE, REMOVAL OF DEVICE	LA	4800	\$	\$
B-82	INLET PROTECTION DEVICE, INSTALLATION, DROP-IN	EA	24	\$	\$
B-83	INLET PROTECTION DEVICE, INSTALLATION, SURFACE-APPLIED	EA	4	\$	\$
B-84	INLET PROTECTION DEVICE, MAINTENANCE	EA	28	\$	\$
B-85	REVTMENT, CLASS E	TON	15	\$	\$
B-86	SAFETY RAIL, POWDER COATED BLACK	LF	100	\$	\$
B-87	CONSTRUCTION SURVEY	LS	1	\$	\$
B-88	MOBILIZATION	LS	1	\$	\$
B-89	CONCRETE WASHOUT	LS	1	\$	\$
B-90	RECTANGULAR RAPID FLASHING BEACON (RRFB) - 2 POSTS PER LOCATION	EA	1	\$	\$
B-91	SOLAR POWERED SPEED FEEDBACK SIGN	EA	1	\$	\$
<b>TOTAL ITEMS B-1 TO B-91 (OPTION B – HMA)</b>					<b>\$</b>
<b>ALTERNATE 1</b>					
C-1	SUBBASE, MODIFIED 6"	SY	57	\$	\$
C-2	TEMPORARY PCC/HMA PAVEMENT, 7"	SY	45		
C-3	TEMPORARY TRAFFIC CONTROL	LS	1		
C-4	TEMPORARY TRAFFIC SIGNALS	EA	8		
C-5	END OF SEASON TEMPORARY EROSION CONTROL	AC	1		

HR Green, Inc.  
 Project No. 2403363

2nd Street Widening  
 Bondurant, Iowa  
 ADDENDUM #2

ITEM NO.		UNIT	QUANTITY	UNIT PRICE	TOTAL
C-6	MOBILIZATION	LS	1		
<b>TOTAL ITEMS C-1 TO C-6 (ALTERNATE 1)</b>					\$

Option A Sub Total (Bid Items A-1 to A-91) \$ \_\_\_\_\_

Option B Sub Total (Bid Items B-1 to B-91) \$ \_\_\_\_\_

Alternate 1 Sub Total (Bid Items C-1 to C-6) \$ \_\_\_\_\_

Total Bid = (Lowest of Option A or Option B) + Alternate 1 \$ \_\_\_\_\_

# SECOND STREET WIDENING

## CITY OF BONDURANT

### BONDURANT, IA

### 2024

THE PROPOSED IMPROVEMENTS INCLUDED IN THESE DRAWINGS HAVE BEEN DESIGNED IN ACCORDANCE WITH THE IOWA STATEWIDE URBAN DESIGN AND SPECIFICATIONS (SUDAS, 2024 EDITION), APPLICABLE SUPPLEMENTAL SPECIFICATIONS, AND SPECIAL PROVISIONS.

### CERTIFICATION

I hereby certify that this engineering document was prepared by me or under my direct personal supervision and that I am a duly licensed Professional Engineer under the laws of the State of Iowa.

*Brandon L. Mickelson*      02/13/2025  
DATE

BRANDON LEE MICKELSON, P.E.  
License Number: 2442528  
My license renewal date is December 31, 2025.  
Pages or sheets covered by this seal:  
A, B, C.01-C.06, D, E, G, H, J, K, L, MWM, Q, S, AND W SHEETS

I hereby certify that this engineering document was prepared by me or under my direct personal supervision and that I am a duly licensed Professional Engineer under the laws of the State of Iowa.

*David A. Braun*      02/13/2025  
DATE

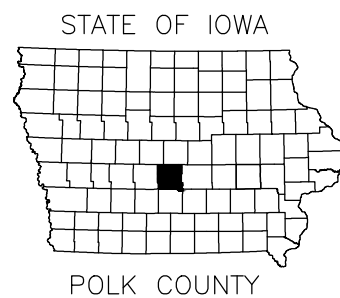
DAVID A. BRAUN, P.E.  
License Number: 28855  
My license renewal date is December 31, 2025.  
Pages or sheets covered by this seal:  
C.07-C.10, F, AND M SHEETS

### LOCATION MAP



### SHEET INDEX

NO.	DESCRIPTION
A.01	COVER SHEET
A.02	SYMBOLS AND LEGEND
B.01-B.05	TYPICAL CROSS SECTIONS
C.01-C.04	QUANTITIES AND GENERAL INFORMATION
C.05-C.10	TABULATIONS & DETAILS
D.01-D.04	MAINLINE PLAN AND PROFILE
E.01-E.03	SIDE ROAD PLAN AND PROFILE
F.01-F.03	EROSION CONTROL
G.01	SURVEY CONTROL
H.01-H.02	STREET ROW AND EASEMENTS
J.01-J.10	STAGING AND TRAFFIC CONTROL
K.01-K.02	PAVEMENT MARKINGS AND TRAFFIC SIGNING
L.01-L.14	GEOMETRIC STAKING AND JOINTING
MWM.01	WATER MAIN PLAN AND PROFILE
M.01-M.04	STORM SEWER PLAN AND PROFILE
Q.01-Q.03	GEOTECHNICAL SOIL BORING LOGS
S.01-S.03	SIDEWALK COMPLIANCE
W.01-W.11	MAINLINE CROSS SECTION



8710 EARHART LANE SW | CEDAR RAPIDS, IOWA 52404  
Phone: 319.841.4000 | Toll Free: 800.728.7805 | Fax: 713.965.0044 | HRGreen.com

PREPARED FOR:



BID SET

DRAWN BY: CJ      JOB DATE: 2024  
APPROVED: BM      JOB NUMBER: 2403363  
CAD DATE: 2/12/2025 4:29:42 PM  
CAD FILE: J:\2024\2403363\CAD\Dwgs\A\A.01.dwg

BAR IS ONE INCH ON OFFICIAL DRAWINGS.  
IF NOT ONE INCH, ADJUST SCALE ACCORDINGLY.

NO.	DATE	BY	REVISION DESCRIPTION
1	02/13/25	DB	ADDENDUM NO. 2



BONDURANT 2ND STREET WIDENING  
CITY OF BONDURANT  
BONDURANT, IA

TITLE SHEETS  
COVER SHEET

SHEET NO.  
A.01

Xref: s:\2024\2403363\CAD\Dwgs\A\A.01.dwg

ESTIMATED PROJECT QUANTITIES

Table with columns: Item No., Item Code, Item, Unit, Total, As Built Qty. Includes sections for OPTION A - PCC and OPTION B - HMA.

ESTIMATED PROJECT QUANTITIES

Table with columns: Item No., Item Code, Item, Unit, Total, As Built Qty. Includes sections for OPTION A - PCC and OPTION B - HMA.

ESTIMATED PROJECT QUANTITIES

Table with columns: Item No., Item Code, Item, Unit, Total, As Built Qty. Includes sections for ALTERNATE 1 and ALTERNATE 2.

PROJECT DESCRIPTION

THIS PROJECT CONSISTS OF THE RECONSTRUCTION AND WIDENING OF 2ND STREET NW IN BONDURANT, IOWA, FROM APPROXIMATELY 800 FEET WEST OF THE 2ND STREET NW AND FRANKLIN STREET SW INTERSECTION TO THE 2ND STREET NW AND LONDON DRIVE NW INTERSECTION.

BID SET

DRAWN BY: CJ JOB DATE: 2024
APPROVED: BM JOB NUMBER: 2403363
CAD DATE: 2/13/2025 10:53:00 AM
CAD FILE: J:\2024\2403363\CAD\Drawings\C.C.01.dwg

Table with columns: NO., DATE, BY, REVISION DESCRIPTION. Includes revision 1: 02/12/25, ADDENDUM NO. 2.



BONDURANT 2ND STREET WIDENING
CITY OF BONDURANT
BONDURANT, IA

QUANTITIES AND GENERAL INFORMATION
ESTIMATED PROJECT QUANTITIES AND
REFERENCE INFORMATION

SHEET NO.
C.01

ESTIMATE REFERENCE INFORMATION		
ITEM NO	ITEM CODE	ITEM DESCRIPTION
<b>OPTION A - PCC</b>		
A-1	2010-A	CLEARING AND GRUBBING 1. REFER TO TABULATION IN THE C SHEETS. 2. FOR TREE REMOVAL(S) REQUIRED AT SE CORNER OF FRANKLIN 2ND FOR WATER MAIN CONNECTIONS/ SIGHT DISTANCE.
A-2	2010-D-3	TOPSOIL OFF-SITE, 8" 1. USE TOPSOIL MEETING REQUIREMENTS OF SUDAS, SECTION 2010, 2.01, C. 2. SUITABLE ON-SITE TOPSOIL MAY BE USED. 3. TESTING OF TOPSOIL REQUIRED TO ENSURE REQUIREMENTS ARE MET. 4. STRIPPING AND REMOVAL OF EXISTING 8" OF TOPSOIL INCLUDED IN EXCAVATION, CLASS 10 ITEM. 5. BID QUANTITY INCLUDES 20% SHRINKAGE. 6. REFER TO EARTHWORK TABULATION IN THE C SHEETS.
A-3	2010-E	EXCAVATION, CLASS 10 1. INCLUDES 5648 CY REQUIRED FOR CUT AND 5770 CY REQUIRED FOR FILL. 2. PAYMENT IS TO BE MADE ON FILL VOLUME. 3. FILL SHALL BE OF SUITABLE MATERIAL AS DESCRIBED IN SUDAS SECTION 2010-2.03. SUITABLE ON-SITE MATERIAL MAY BE USED. 4. FILL BEING PLACED WITHIN THE PROJECT SHALL BE PLACED IN LIFTS NOT MORE THAN 6 INCHES OR LESS THAN 2 INCHES COMPACTED THICKNESS. THE MATERIAL SHALL BE COMPACTED TO 95.0% OF THE STANDARD PROCTOR DRY DENSITY FOR THE MATERIAL BEING PLACED. 5. ALL REMNANTS OR ITEMS ENCOUNTERED THAT ARE UNORDINARY OR UNUSUAL ARE CONSIDERED INCLUDED IN THE BID ITEM AND SHALL BECOME PROPERTY OF THE CONTRACTOR FOR DISPOSAL. 6. BID QUANTITY INCLUDES 35% SHRINKAGE. 7. BID ITEM INCLUDES DEWATERING OF TRENCH.
A-4	2010-F	BELOW GRADE EXCAVATION (CORE OUT) 1. PAY ITEM IS INCLUDED AS A CONTINGENCY AND SHALL ONLY BE USED IF AUTHORIZED BY THE ENGINEER. 2. REPLACEMENT FOUNDATION MATERIAL SHALL BE SPECIAL BACKFILL.
A-5	2010-G	SUBGRADE PREPARATION 1. COMPACT ACCORDING TO SUDAS, SECTION 2010, 3.06. 2. 12" SUBGRADE PREP WITH CBR OF 10. TOLERANCE OF -2 CBR. CBR LESS THAN 8 WILL NOT BE ACCEPTED. 3. SEE SUBGRADE TREATMENT ITEM TO BE USED TO ACHIEVE CBR OF 10 BASED ON GEOTECHNICAL RECOMMENDATION.
A-6	2010-I	SUBGRADE TREATMENT, 6% CEMENT 1. QUANTITY OF CEMENT REQUIRED FOR SUBGRADE PREPARATION TO ACHIEVE A CBR OF 10 BASED ON GEOTECHNICAL RECOMMENDATION. 2. TO BE PAID FOR QUANTITY INCORPORATED INTO THE PROJECT.
A-7	2010-J	SUBBASE, MODIFIED 4"
A-8	2010-J	SUBBASE, MODIFIED 6" 1. REFER TO B SHEETS FOR TYPICAL SECTIONS.
A-9	2010-M	COMPACTION TESTING FOR SUBGRADE AND CBR TESTING.
A-10	2010-X	EXPLORATORY EXCAVATION 1. MEASUREMENT SHALL BE FOR EACH HOUR OF EXPLORATORY EXCAVATION AS SHOWN ON THE PLANS OR APPROVED BY THE ENGINEER. PAYMENT SHALL BE CONSIDERED FULL COMPENSATION FOR EXPLORATORY EXCAVATION WITH A VACUUM TRENCH OR EXCAVATOR AND SUBSIDIARY LABOR AND MATERIALS. PAYMENT WILL BE MADE TO THE NEAREST ONE-HALF HOUR. LOCATING UTILITY LINES SHOWN ON THE PLANS AND AS MARKED BY IOWA ONE CALL WILL NOT BE COVERED UNDER THIS BID ITEM, UNLESS NOTED OTHERWISE ON THE PLANS, THIS WORK WILL BE CONSIDERED INCIDENTAL TO THE MAJOR WORK BEING COMPLETED. 2. ASSUMED FOUR HOURS AS APPROVED BY ENGINEER.
A-11	3010-F	TRENCH COMPACTION TESTING
A-12	4020-A-1	STORM SEWER, TRENCHED, HDPE, 15"
A-13	4020-A-1	STORM SEWER, TRENCHED, HDPE, 18"
A-13-2	4020-A-1	STORM SEWER, TRENCHED, RCP, 15" / 2
A-14	4020-A-1	STORM SEWER, TRENCHED, RCP, 24"
A-15	4020-A-1	STORM SEWER, TRENCHED, RCP, 48" 1. DO NOT USE JOINTING MATERIAL, UNLESS SPECIFIED AT WATER MAIN CROSSINGS. WRAP ALL JOINTS WITH ENGINEERING FABRIC. 2. FOR PIPES INSTALLED AT BACK OF CURB, BACKFILL WITH GRANULAR BEDDING AND BACKFILL MATERIAL TO BOTTOM OF SUBBASE MATERIAL. GRANULAR BACKFILL IS INCIDENTAL. 3. FOR ALL OTHER STORM SEWER PIPES BACKFILL WITH GRANULAR BEDDING AND BACKFILL MATERIAL TO A MINIMUM OF 0.5' FROM THE TOP OF PIPE. 4. UTILIZE RUBBER O-RING OR PROFILE GASKET COMPLYING WITH ASTM C 443 AT WATER MAIN CROSSING LOCATIONS AND WHERE STORM SEWER IS BETWEEN 3' AND 10' FROM THE WATER MAIN. 5. CONNECTIONS TO EXISTING PIPE/ STRUCTURES INCIDENTAL TO THIS ITEM. MAINTAIN AND RE-ESTABLISH ALL TIE-INS AND EXISTING CONNECTION TO EXISTING STRUCTURES AND PIPES UNLESS INDICATED OTHERWISE IN THE PLANS. 6. TEMPORARY CONNECTIONS TO EXISTING DUE TO CONSTRUCTION STAGING INCIDENTAL TO THIS ITEM.
A-16	4020-D	REMOVAL OF STORM SEWER, CMP, 15"
A-17	4020-D	REMOVAL OF STORM SEWER, RCP, 15"
A-18	4020-D	REMOVAL OF STORM SEWER, CMP, 18"
A-19	4020-D	REMOVAL OF STORM SEWER, CMP, 24"
A-20	4020-D	REMOVAL OF STORM SEWER, CMP, 30"
A-21	4020-D	REMOVAL OF STORM SEWER, RCP, 30" 1. REFER TO C SHEETS FOR SANITARY OR STORM SEWER ABANDONMENT OR REMOVAL TABULATION. 2. INCLUDES REMOVAL OF PIPE APRONS.
A-22	4020-F	PLUG OF EXISTING STORM SEWER CONNECTION, 18" 1. REFER TO SHEET M02 FOR PLUG LOCATION. 2. PLUG AND CUT THE EXISTING 18" CMP CONNECTION INTO THE SIDE WALL OF THE EXISTING 8'x8' RCB PRIOR TO REMOVING THE REMAINING LENGTH OF EXISTING 18" CMP.

ESTIMATE REFERENCE INFORMATION		
ITEM NO	ITEM CODE	ITEM DESCRIPTION
A-23	4030-A-1	PIPE CULVERT, CMP, 30" 1. FOR CULVERT EXTENSIONS AT WEST END OF PROJECT. 2. CONNECTION TO EXISTING CULVERT INCIDENTAL.
A-24	4030-B	PIPE APRONS, RCP, 15"
A-25	4030-B	PIPE APRONS, RCP, 24" 1. PIPE APRONS SHALL CONFORM TO SUDAS DETAIL 4040.222, TYPE 1. 2. CONNECTION TO EXISTING CULVERT WITH THE USE OF CONCRETE COLLARS INCIDENTAL.
A-26	4030-B	PIPE APRONS AND APRON GUARDS, CMP, 30" 1. ITEM INCLUDES PIPE APRONS AND PIPE GUARDS AND SHALL CONFORM TO SUDAS DETAIL 4040.226.
A-27	4030-C	FOOTINGS FOR APRONS 1. FOOTINGS SHALL CONFORM TO SUDAS DETAIL 4040.221
A-28	4030-D	PIPE APRON GUARD, 15"
A-29	4030-D	PIPE APRON GUARD, 24" 1. PIPE APRON GUARDS SHALL CONFORM TO SUDAS DETAIL 4040.224
A-30	4040-A	SUBDRAIN, CASE B, TYPE 1, PVC, 6" 1. REFER TO SUDAS DETAIL 4040.231 2. THE SUBDRAIN SHALL BE INSTALLED PRIOR TO THE INSTALLATION OF ROADWAY PAVEMENT. 3. REFER TO B SHEETS FOR TYPICAL SECTIONS. 4. WRAP SUBDRAIN AND POROUS BACKFILL MATERIAL IN ENGINEERING FABRIC.
A-31	4040-C	SUBDRAIN CLEANOUT, TYPE A-1, PVC, 6" 1. REFER TO MSHEETS FOR SUBDRAIN CLEANOUT LOCATIONS. 2. REFER TO SUDAS DETAIL 4040.232
A-32	4040-D	SUBDRAIN OUTLETS AND CONNECTIONS, PVC, 6" 1. REFER TO SUDAS DETAIL 4040.233 FOR BOTH SUBDRAIN OUTLETS INTO STRUCTURES AND DITCHES.
A-33	5010-A-1	WATER MAIN, TRENCHED, PVC, 8"
A-34	5010-A-1	WATER MAIN, TRENCHED, PVC, 12"
A-35	5010-A-2	WATER MAIN, TRENCHLESS, PVC, 12" 1. PIPE SHALL BE PVC C900 DR18, UNLESS OTHERWISE NOTED. RESTRAINED JOINT PIPE MAY BE SUBSTITUTED AT NO ADDITIONAL COST. 2. ITEM INCLUDES CLEANING, TESTING AND DISINFECTION OF WATER MAINS PER SUDAS 5030 3. CONTRACTOR SHALL NOTIFY AND COORDINATE WITH THE CITY OF BONDURANT PRIOR TO FLUSHING AND DISINFECTION. 4. ITEM INCLUDES TRACER WIRE SYSTEM PER SUDAS FIGURE 5010.102 AND FINAL INSPECTION AND ELECTRICAL CONTINUITY VERIFICATION OF TRACER WIRE SYSTEM PER SUDAS SECTION 5010, 3.05 5. INSTALL BEDDING AS CLASS P-2 PER SUDAS FIGURE 3010.104 6. ITEM INCLUDES EXCAVATION AND LOCATING OF EXISTING WATER MAIN FOR CONNECTION, AND REMOVAL OF EXISTING 12" CAP TO EXTEND NEW WATER MAIN FROM.
A-36	5010-C-2	FITTINGS, DUCTILE IRON, MECHANICAL JOINT, BY WEIGHT 1. FITTINGS SHALL BE DUCTILE IRON MECHANICAL JOINT RESTRAINED WITH MEGALUG SERIES 2000PV OR 1100, OR APPROVED EQUAL. 2. ALL FITTING ACCESSORIES NECESSARY FOR A COMPLETE INSTALLATION INCLUDING MEGALUGS ARE INCIDENTAL AND NOT INCLUDED IN THE BID WEIGHT. PAYMENT BY WEIGHT OF FITTINGS INSTALLED, BASED ON AWWA C153 STANDARD FITTING BODY WEIGHTS. 3. POLY-WRAP IS REQUIRED AND IS INCIDENTAL. 4. THRUST BLOCKS SHALL BE PROVIDED FOR ALL BENDS AND TEES AND CONSIDERED INCIDENTAL TO THIS ITEM.
A-37	5010-H	WATER MAIN REMOVAL, 8"
A-38	5020-A	VALVE, GATE, 12" 1. VALVES SHALL BE DUCTILE IRON MECHANICAL JOINT RESTRAINED WITH MEGALUG SERIES 2000PV OR APPROVED EQUAL. 2. ITEM INCLUDES ALL VALVE ACCESSORIES NECESSARY FOR A COMPLETE INSTALLATION INCLUDING MEGALUGS. 3. POLY-WRAP IS REQUIRED AND IS INCIDENTAL. 4. PROVIDE VALVE BOX ADAPTER II, OR ENGINEER APPROVED EQUIVALENT. FOR ALL VALVE BOXES.
A-39	5020-C	FIRE HYDRANT ASSEMBLY 1. FIRE HYDRANT SHALL BE CLOW MEDALLION OR WATEROUS WB-67-250. 2. HYDRANTS SHALL BE PROVIDED WITH 5" STORZ PUMPER NOZZLE AND TWO (2) 2-1/2" HOSE NOZZLES. 3. ITEM INCLUDES ALL MATERIAL AND FITTING ACCESSORIES NECESSARY FOR A COMPLETE INSTALLATION. 4. HYDRANT ASSEMBLY SHALL BE COMPLETELY RESTRAINED WITH RETAINING GLANDS OR WITH ANCHOR PIPE AND COUPLINGS IN ACCORDANCE WITH SUDAS 5020.201.
A-40	5020-G	VALVE BOX EXTENSION
A-41	5020-I	FIRE HYDRANT ADJUSTMENT 1. REFER TO D SHEETS FOR ADJUSTMENT LOCATIONS.
A-42	6010-B	STORM SEWER INTAKE, SW-505
A-43	6010-B	STORM SEWER INTAKE, SW-506, MODIFIED
A-44	6010-B	STORM SEWER INTAKE, SW-513, 8'x4'
A-45		Item Removed by Addendum No. 2 / 2 1. REFER TO C SHEETS FOR STORM SEWER STRUCTURE TABULATION. 2. REFER TO MSHEETS FOR LOCATION OF STRUCTURES.
A-46	6010-E-1	MANHOLE ADJUSTMENT, MINOR 1. ADJUST EXISTING MANHOLE TO MATCH PROPOSED SURFACE ELEVATION

BID SET

DRAWN BY: CJ JOB DATE: 2024  
 APPROVED: BM JOB NUMBER: 2403363  
 CAD DATE: 2/13/2025 9:57:49 AM  
 CAD FILE: J:\2024\2403363\CAD\Dwgs\C\C.01.dwg

BAR IS ONE INCH ON OFFICIAL DRAWINGS.  
 IF NOT ONE INCH, ADJUST SCALE ACCORDINGLY.

NO.	DATE	BY	REVISION DESCRIPTION
1	02/13/25	DB	ADDENDUM NO. 2



BONDURANT 2ND STREET WIDENING  
 CITY OF BONDURANT  
 BONDURANT, IA

QUANTITIES AND GENERAL INFORMATION  
 ESTIMATE REFERENCE INFORMATION

SHEET NO.  
 C.02

ESTIMATE REFERENCE INFORMATION		
ITEM NO	ITEM CODE	ITEM DESCRIPTION
A-47	8010-G	CONNECTION TO EXISTING 8'X8' RCB 1. CONNECT TO EXISTING STRUCTURE PER SUDAS 8010 3.05 AS INDICATED ON THE M/SHEETS 2. CORE OPENINGS IN THE SIDE WALLS OF THE EXISTING 8'X10' RCB IN APPROXIMATE LOCATIONS OF THE PREVIOUS PIPE CULVERT CONNECTIONS.
A-48 A-49	7010-A 7010-A	PAVEMENT, PCC, 7" PAVEMENT, PCC, 9" 1. REFER TO THE B SHEETS FOR TYPICAL SECTIONS. 2. REFER TO THE C SHEETS FOR TABULATIONS. 3. REFER TO THE L SHEETS FOR JOINTING AND STAKING INFORMATION. 4. CONCRETE SHALL BE CLASS C MIX (C-SUD) (IOWA DOT, IM 529, WITH TYPE 1 CEMENT AND AGGREGATE PROPORTIONS OF 55% COARSE AND 45% FINE, SLAG IS NOT ALLOWED). A. AIR ENTRAINMENT SHALL BE 6% TO 8% AFTER PLACEMENT. B. WATER TO CEMENT (W/C) RATIO SHALL BE 0.40 WITH A MAX OF 0.45. C. SUPPLEMENTARY CEMENTITIOUS MATERIALS (SCMs) MAY BE USED. CLASS C FLY ASH, 30-35% MAX OR CLASS F FLY ASH, 20-25% MAX. 5. CONTRACTOR SHALL PROVIDE CERTIFIED PLANT INSPECTION FOR PORTLAND CEMENT CONCRETE PER SPECIFICATIONS. 6. ALL CURBS ADJACENT/INTEGRAL TO PCC PAVING ARE CONSIDERED INCIDENTAL TO THIS ITEM.
A-50	7010-A	TEMPORARY PCC/HMA PAVEMENT, 7" 1. PAY ITEMS FOR TEMPORARY PAVING. REFER TO LOCATIONS IN J SHEETS AND TABULATION IN C SHEETS. 2. MEASUREMENT WILL BE PER SQUARE YARD OF TEMPORARY PAVEMENT, HMA AND/OR PCC. 3. ITEM INCLUDES, BUT IS NOT LIMITED TO SUBGRADE PREPARATION, 6" OF MODIFIED SUBBASE. 7" OF HMA AND/OR PCC MATERIAL, REMOVAL OF TEMPORARY PAVEMENT AND FINAL CURB/GUTTER REPLACEMENT. 4. COMPLY WITH IOWA DOT CLASS C MIX FOR PCC. COMPLY WITH SUDAS STANDARD 1/2" PG-58-28S MIX FOR HMA. 5. FIELD FIT TEMPORARY DRIVEWAY ELEVATIONS.
A-51	7010-G	CONCRETE MEDIAN, 6" 1. REFER TO D SHEETS FOR LOCATION. 2. THIS ITEM INCLUDES MODIFIED SUBBASE UNDERNEATH MEDIAN PAVEMENT. 3. THIS ITEM INCLUDES 4" PVC SLEEVE FOR FUTURE SIGNAGE INSTALLATION. REFER TO K SHEETS FOR LOCATION AND C SHEETS FOR TABULATION.
A-52	7010-I	PCC PAVEMENT SAMPLES AND TESTING
A-53	7020-B	PAVEMENT, HMA, 10", HIGH TRAFFIC, PG 58-28H 1. REFER TO B SHEETS FOR REQUIRED LOCATIONS, DIMENSIONS AND THICKNESSES. 2. ITEM INCLUDES ASPHALT BINDER. USE PG 58-28H ASPHALT BINDER FOR ALL LIFTS. 3. NOMINAL MAXIMUM AGGREGATE SIZE SHALL BE 1/2" FOR SURFACE AND INTERMEDIATE MIXES AND 3/4" FOR BASE MIX. 4. PAVEMENT SMOOTHNESS AND PERCENT WITHIN LIMITS WILL NOT BE EVALUATED FOR INCENTIVE/DISINCENTIVE PAYMENT.
A-54	7020-I	HMA PAVEMENT SAMPLES AND TESTING
A-55	7030-A-1	REMOVAL OF SIDEWALK
A-56	7030-A-3	REMOVAL OF DRIVEWAY 1. INCLUDES ALL SAW CUTTING NECESSARY TO CREATE A CLEAN EDGE BETWEEN EXISTING AND PROPOSED SIDEWALKS 2. INCLUDES REMOVAL OF 2' WIDE, 7" THICK PCC LANDSCAPE PROTECTOR AT CASEY'S DRIVEWAYS.
A-57	7030-B	REMOVAL OF CURB 1. GRIND OR SAW EXISTING CURBS AS SHOWN IN D SHEETS TO INSTALL SIDEWALKS. 2. FINAL HEIGHT OF REMOVED CURB SHALL BE A MAXIMUM OF 1/4" OR 1/2" IF CURB IS SLOPED/BEVELED FROM BACK OF CURB TO GUTTER.
A-58 A-59 A-60	7030-C 7030-E 7030-E	SHARED USE PATH, PCC, 6" SIDEWALK, PCC, 4" SIDEWALK, PCC, 6" 1. REFER TO S SHEETS FOR SIDEWALK COMPLIANCE. 2. REFER TO SUDAS DETAIL 7030.205 FOR CURB RAMP SIDEWALK THICKNESSES.
A-61	7030-G	DETECTABLE WARNING 1. MATERIAL SHALL BE YELLOW PLASTIC.
A-62	7030-H-1	DRIVEWAY, PAVED, PCC, 7" 1. EXCAVATION AND GRADING FOR DRIVEWAYS IS INCIDENTAL TO THIS ITEM. 2. THIS ITEM INCLUDES 2' WIDE, 7" THICK PCC LANDSCAPE PROTECTOR AS SHOWN ON SHEETS D.02 AND D.03 AND MODIFIED SUBBASE BELOW THE LANDSCAPE PROTECTOR.
A-63	7030-H-3	DRIVEWAY, GRANULAR, CLASS A CRUSHED STONE 1. QUANTITY BASED ON ADDITIONAL 3" FOR EXISTING GRANULAR DRIVEWAYS TO MATCH NEW IMPROVEMENTS. 2. QUANTITY BASED ON A DENSITY OF 140 PCF.
A-64	7040-H	PAVEMENT REMOVAL 1. INCLUDES ALL SAW CUTTING NECESSARY TO CREATE A CLEAN EDGE BETWEEN EXISTING AND PROPOSED.
A-65	7999-A	GRANULAR SHOULDERS, TYPE B 1. SEE IOWA DOT SPECIFICATION SECTION 2121 2. QUANTITY BASED ON A DENSITY OF 140 PCF 3. PAYMENT WILL BE BASED ON ACTUAL QUANTITY PLACED
A-66 A-67	8020-C 8020-G	PAINTED PAVEMENT MARKINGS, DURABLE PAINTED SYMBOLS AND LEGENDS, DURABLE 1. LOCATIONS AS SHOWN ON K SHEETS 2. BID QUANTITY BASED ON 6-INCH WIDE CONTINUOUS LINE.
A-68 A-69	8020-M 8020-N	GROOVES CUT FOR PAVEMENT MARKINGS GROOVES CUT FOR SYMBOLS AND LEGENDS

ESTIMATE REFERENCE INFORMATION		
ITEM NO	ITEM CODE	ITEM DESCRIPTION
A-70	8030-A	TEMPORARY TRAFFIC CONTROL 1. THIS ITEM WILL NOT BE MEASURED. ITEM WILL BE PAID PER LUMP SUM. CONTRACTOR TO NOTIFY CITY OF BONDURANT AND POLK COUNTY 48 HOURS BEFORE ANY CHANGES IN TRAFFIC CONTROL. 2. SAFETY CLOSURES INCIDENTAL TO THIS ITEM. 3. PORTABLE DYNAMIC MESSAGE SIGNS (PDMS) INCIDENTAL TO THIS ITEM.
A-71	8040-J	REMOVE AND SALVAGE TRAFFIC SIGN ASSEMBLY 1. EXISTING SIGNS WITHIN PROJECT LIMITS SHALL BE REMOVED, SALVAGED, AND DELIVERED TO THE CITY. 2. COORDINATE WITH CITY FOR DELIVERY AND STORAGE LOCATION FOR REMOVED SIGNAGE. 3. REPLACING SIGNS AND POSTS DESIGNATED FOR SALVAGE THAT HAVE BEEN DAMAGED IS THE CONTRACTOR'S RESPONSIBILITY.
A-72	9010-A	CONVENTIONAL SEEDING, FERTILIZING, AND MULCHING, TYPE 1
A-73	9010-E	WARRANTY 1. THIS ITEM INCLUDES 12 MONTH WARRANTY PERIOD FOR ALL PERMANENT SEEDING TO COMPLY WITH SUDAS 9010, 3.10.
A-74 A-75	9040-A-1 9040-A-2	SWPPP PREPARATION SWPPP MANAGEMENT
A-76	9040-E	TEMPORARY ROLLED EROSION CONTROL PRODUCT, TYPE 2D 1. FOR SLOPE PROTECTION AT LOCATIONS WHERE SUBRAIN OUTLETS TO DITCH. REFER TO F SHEETS FOR LOCATIONS. 2. NATURAL FIBER ONLY, SYNTHETIC/POLYMER FIBER PRODUCTS ARE NOT TO BE USED.
A-77 A-78	9040-F-1 9040-F-2	WATTLE, 9" WATTLE, REMOVAL 1. REFER TO F SHEETS FOR LOCATIONS. 2. ADDITIONAL QUANTITY PROVIDED TO USE AS DIRECTED BY THE CITY/ENGINEER 3. WHEN ACCUMULATED SEDIMENT REACHES A LEVEL OF ONE-HALF THE HEIGHT OF THE WATTLE, OR WHEN THE WATTLE BECOMES CLOGGED WITH SEDIMENT AND NO LONGER ALLOWS RUNOFF TO FLOW THROUGH, REMOVE AND REPLACE THE WATTLE ACCORDING TO SUDAS 9040.309.
A-79 A-80 A-81	9040-N-1 9040-N-2 9040-N-3	SILT FENCE, INSTALLATION SILT FENCE, REMOVAL OF SEDIMENT SILT FENCE, REMOVAL OF DEVICE 1. SILT FENCE IS INTENDED FOR PERIMETER CONTROL ALONG DOWNSLOPES AND PERPENDICULAR TO FLOW. 2. CONSTRUCT A "J-HOOK" AT EACH END OF A CONTINUOUS RUN OF SILT FENCE AND INSERT 12 INCHES OF FABRIC TO A MINIMUM DEPTH OF 6 INCHES TO PREVENT ANY RUNOFF FROM FLOWING AROUND ENDS OR UNDER THE FENCE. 3. REFER TO F SHEETS FOR LOCATIONS. 4. ADDITIONAL QUANTITY PROVIDED TO USE AS DIRECTED BY THE CITY/ENGINEER. 5. WHEN ACCUMULATED SEDIMENT REACHES A LEVEL OF ONE-HALF THE HEIGHT OF THE FENCE, REMOVE AND REPLACE THE SILT FENCE ACCORDING TO SUDAS 9040.318.
A-82 A-83 A-84	9040-T-1 9040-T-1 9040-T-2	INLET PROTECTION DEVICE, INSTALLATION, DROP-IN INLET PROTECTION DEVICE, INSTALLATION, SURFACE-APPLIED INLET PROTECTION DEVICE, MAINTENANCE 1. FOR ALL EXISTING AND PROPOSED STORM SEWER INLETS. REFER TO F SHEETS FOR LOCATIONS. 2. REMOVE ACCUMULATED SEDIMENT, AS REQUIRED TO MAINTAIN THE INLET PROTECTION DEVICE IN WORKING ORDER.
A-85	9999-A	REVIEW, CLASS E 1. REFER TO IOWA DOT SPECIFICATION 4130. 2. THIS ITEM IS FOR ROCK FLUME EROSION CONTROL. SEE IOWA DOT STANDARD ROAD PLAN EC-301. 3. ENGINEERING FABRIC AND STAPLES THAT ARE REQUIRED FOR ROCK FLUME ARE INCIDENTAL TO THIS ITEM.
A-86	9080-C	SAFETY RAIL, POWDER COATED BLACK 1. REFER TO D SHEETS FOR LOCATION. 2. INCLUDES ALL HARDWARE AND MATERIALS NECESSARY TO ATTACH RAILING TO TOP OF CONCRETE BOX CULVERT OR SET RAILING IN GROUND. SEE SUDAS 9080.103.
A-87	11010-A	CONSTRUCTION SURVEY
A-88	11020-A	MOBILIZATION 1. THIS ITEM WILL NOT BE MEASURED. THIS ITEM WILL BE PAID PER LUMP SUM.
A-89	11050-A	CONCRETE WASHOUT
A-90	119999-A	RECTANGULAR RAPID FLASHING BEACON (RRFB) - 2 POSTS PER LOCATION 1. UNIT PRICE INCLUDES FURNISHING AND INSTALLATION OF SIGNS (W11-15 BICYCLE & PEDESTRIAN SIGNS, W16-7PRL DIAGONAL DOWN ARROWS, AND OTHER REQUIRED SIGNS), FLASHER, APS PUSH BUTTON WITH SIGN, SOLAR PANEL, WIRELESS COMMUNICATIONS, PEDESTAL POLE AND BASE, FOUNDATION AND EQUIPMENT PER LOCATION. 2. W11-15 AND W16-7P SIGNS SHALL BE FLUORESCENT YELLOW-GREEN IN COLOR. 3. UNIT PRICE FOR EACH IS FOR ONE CROSSING LOCATION THAT INCLUDES POSTS ON EACH SIDE OF 2ND STREET FOR A TOTAL OF TWO (2) POSTS PER CROSSING LOCATION. 4. MATERIALS SHALL BE PER IOWA DOT STANDARD SPECIFICATIONS SECTION 2525, AND DIVISION 41. 5. RRFB SYSTEM SHALL BE RTC MANUFACTURING, INC. 6. METHOD OF MEASUREMENT SHALL BE PER FULLY OPERATIONAL RRFB ASSEMBLY INSTALLATION. BASIS OF PAYMENT SHALL BE FOR EACH LOCATION FOR ALL MATERIALS, EQUIPMENT, AND INSTALLATION OF AN OPERATIONAL ASSEMBLY.
A-91	119999-B	SOLAR POWERED SPEED FEEDBACK SIGN 1. UNIT PRICE SHALL INCLUDE SOLAR POWERED SPEED FEEDBACK SIGN WITH 12" DIGITS (24" WIDE SIGN), 24" X 30" R2-1 (40 MPH SPEED LIMIT) SIGN, POST/POLE, POST/POLE ANCHOR/FOUNDATION, MOUNTING HARDWARE, FREIGHT, SHIPPING, PACKAGING, AND DELIVERY FEES AND INSTALLATION TO MAKE OPERATIONAL. 2. SPEED FEEDBACK SIGN SHALL BE RTC MANUFACTURING, INC. DRIVER FEEDBACK SIGN WITH RTC'S DFS STANDALONE POWER ENCLOSURE.

BID SET

DRAWN BY: CJ JOB DATE: 2024  
APPROVED: BM JOB NUMBER: 2403363  
CAD DATE: 2/12/2025 4:24:02 PM  
CAD FILE: J:\2024\2403363\CAD\Dwgs\C\C.01.dwg

BAR IS ONE INCH ON OFFICIAL DRAWINGS.  
IF NOT ONE INCH, ADJUST SCALE ACCORDINGLY.

NO.	DATE	BY	REVISION DESCRIPTION
1	02/13/25	DB	ADDENDUM NO. 2



BONDURANT 2ND STREET WIDENING  
CITY OF BONDURANT  
BONDURANT, IA

QUANTITIES AND GENERAL INFORMATION  
ESTIMATE REFERENCE INFORMATION

SHEET NO.  
C.03

ESTIMATE REFERENCE INFORMATION		
ITEM NO.	ITEM CODE	ITEM DESCRIPTION
OPTION B - HMA: REFER TO OPTION A ERI NOTES. ADDITIONS/CHANGES TO OPTION A NOTES ARE LISTED BELOW.		
B-1	2010-A	CLEARING AND GRUBBING
B-2	2010-D-3	TOPSOIL OFF-SITE, 8"
B-3	2010-E	EXCAVATION, CLASS 10 1. INCLUDES 5882 CY REQUIRED FOR CUT AND 5770 CY REQUIRED FOR FILL. 2. PAYMENT IS TO BE MADE ON CUT VOLUME. 3. FILL SHALL BE OF SUITABLE MATERIAL AS DESCRIBED IN SUDAS SECTION 2010-2.03. SUITABLE ON-SITE MATERIAL MAY BE USED. 4. FILL BEING PLACED WITHIN THE PROJECT SHALL BE PLACED IN LIFTS NOT MORE THAN 8 INCHES OR LESS THAN 2 INCHES COMPACTED THICKNESS. THE MATERIAL SHALL BE COMPACTED TO 95.0% OF THE STANDARD PROCTOR DRY DENSITY FOR THE MATERIAL BEING PLACED. 5. ALL REMNANTS OR ITEMS ENCOUNTERED THAT ARE UNORDINARY OR UNUSUAL ARE CONSIDERED INCLUDED IN THE BID ITEM AND SHALL BECOME PROPERTY OF THE CONTRACTOR FOR DISPOSAL. 6. BID QUANTITY INCLUDES 35% SHRINKAGE. 7. BID ITEM INCLUDES DEWATERING OF TRENCH.
B-4	2010-F	BELOW GRADE EXCAVATION (CORE OUT)
B-5	2010-G	SUBGRADE PREPARATION
B-6	2010-I	SUBGRADE TREATMENT, 6% CEMENT
B-7	2010-J	SUBBASE, MODIFIED 4"
B-8	2010-J	SUBBASE, MODIFIED 6"
B-9	2010-M	COMPACTION TESTING
B-10	2010-X	EXPLORATORY EXCAVATION
B-11	3010-F	TRENCH COMPACTION TESTING
B-12	4020-A-1	STORM SEWER, TRENCHED, HDPE, 15"
B-13	4020-A-1	STORM SEWER, TRENCHED, HDPE, 18"
B-13-2	4020-A-1	STORM SEWER, TRENCHED, RCP, 15" <sup>2</sup>
B-14	4020-A-1	STORM SEWER, TRENCHED, RCP, 24"
B-15	4020-A-1	STORM SEWER, TRENCHED, RCP, 48"
B-16	4020-D	REMOVAL OF STORM SEWER, CMP, 15"
B-17	4020-D	REMOVAL OF STORM SEWER, RCP, 15"
B-18	4020-D	REMOVAL OF STORM SEWER, CMP, 18"
B-19	4020-D	REMOVAL OF STORM SEWER, CMP, 24"
B-20	4020-D	REMOVAL OF STORM SEWER, CMP, 30"
B-21	4020-D	REMOVAL OF STORM SEWER, RCP, 30"
B-22	4020-F	PLUG OF EXISTING STORM SEWER CONNECTION, 18"
B-23	4030-A-1	PIPE CULVERT, CMP, 30"
B-24	4030-B	PIPE APRONS, RCP, 15"
B-25	4030-B	PIPE APRONS, RCP, 24"
B-26	4030-B	PIPE APRONS AND APRON GUARDS, CMP, 30"
B-27	4030-C	FOOTINGS FOR APRONS
B-28	4030-D	PIPE APRON GUARD, 15"
B-29	4030-D	PIPE APRON GUARD, 24"
B-30	4040-A	SUBDRAIN, CASE B, TYPE 1, PVC, 6"
B-31	4040-C	SUBDRAIN CLEANOUT, TYPE A-1, PVC, 6"
B-32	4040-D	SUBDRAIN OUTLETS AND CONNECTIONS, PVC, 6"
B-33	5010-A-1	WATER MAIN, TRENCHED, PVC, 8"
B-34	5010-A-1	WATER MAIN, TRENCHED, PVC, 12"
B-35	5010-A-2	WATER MAIN, TRENCHLESS, PVC, 12"
B-36	5010-C-2	FITTINGS, DUCTILE IRON, MECHANICAL JOINT, BY WEIGHT
B-37	5010-H	WATER MAIN REMOVAL, 8"
B-38	5020-A	VALVE, GATE, 12"
B-39	5020-C	FIRE HYDRANT ASSEMBLY
B-40	5020-G	VALVE BOX EXTENSION
B-41	5020-I	FIRE HYDRANT ADJUSTMENT
B-42	6010-B	STORM SEWER INTAKE, SW-505
B-43	6010-B	STORM SEWER INTAKE, SW-506, MODIFIED
B-44	6010-B	STORM SEWER INTAKE, SW-513, 6x4
B-45		Item Removed by Addendum No. 2 <sup>2</sup>
B-46	6010-E-1	MANHOLE ADJUSTMENT, MINOR
B-47	6010-G	CONNECTION TO EXISTING 8'x8' RCB
B-48	7010-A	PAVEMENT, PCC, 7"
B-49	7010-A	TEMPORARY PCC/HMA PAVEMENT, 7"
B-50	7010-E	CURB AND GUTTER, 10" THICK, 30" WIDE 1. REFER TO B SHEETS FOR TYPICAL SECTIONS.
B-51	7010-G	CONCRETE MEDIAN, 6"
B-52	7010-I	PCC PAVEMENT SAMPLES AND TESTING
B-53	7020-B	PAVEMENT, HMA, 10", HIGH TRAFFIC, PG 58-28H
B-54	7020-I	HMA PAVEMENT SAMPLES AND TESTING
B-55	7030-A-1	REMOVAL OF SIDEWALK
B-56	7030-A-3	REMOVAL OF DRIVEWAY
B-57	7030-B	REMOVAL OF CURB
B-58	7030-C	SHARED USE PATH, PCC, 6"
B-59	7030-E	SIDEWALK, PCC, 4"
B-60	7030-E	SIDEWALK, PCC, 6"
B-61	7030-G	DETECTABLE WARNING
B-62	7030-H-1	DRIVEWAY, PAVED, PCC, 7"
B-63	7030-H-3	DRIVEWAY, GRANULAR, CLASS A CRUSHED STONE
B-64	7040-H	PAVEMENT REMOVAL
B-65	7999-A	GRANULAR SHOULDERS, TYPE B
B-66	8020-C	PAINTED PAVEMENT MARKINGS, WATERBORNE

ESTIMATE REFERENCE INFORMATION		
ITEM NO.	ITEM CODE	ITEM DESCRIPTION
B-67	8020-G	PAINTED SYMBOLS AND LEGENDS, WATERBORNE
B-68	8020-M	GROOVES CUT FOR PAVEMENT MARKINGS
B-69	8020-N	GROOVES CUT FOR SYMBOLS AND LEGENDS
B-70	8030-A	TEMPORARY TRAFFIC CONTROL
B-71	8040-J	REMOVE AND SALVAGE TRAFFIC SIGN ASSEMBLY
B-72	9010-A	CONVENTIONAL SEEDING, FERTILIZING, AND MULCHING, TYPE 1
B-73	9010-E	WARRANTY
B-74	9040-A-1	SWPPP PREPARATION
B-75	9040-A-2	SWPPP MANAGEMENT
B-76	9040-E	TEMPORARY ROLLED EROSION CONTROL PRODUCT, TYPE 2D
B-77	9040-F-1	WATTLE, 9"
B-78	9040-F-2	WATTLE, REMOVAL
B-79	9040-N-1	SILT FENCE, INSTALLATION
B-80	9040-N-2	SILT FENCE, REMOVAL OF SEDIMENT
B-81	9040-N-3	SILT FENCE, REMOVAL OF DEVICE
B-82	9040-T-1	INLET PROTECTION DEVICE, INSTALLATION, DROP-IN
B-83	9040-T-1	INLET PROTECTION DEVICE, INSTALLATION, SURFACE-APPLIED
B-84	9040-T-2	INLET PROTECTION DEVICE, MAINTENANCE
B-85	9099-A	REVTMENT, CLASS E
B-86	9080-C	SAFETY RAIL, POWDER COATED BLACK
B-87	11010-A	CONSTRUCTION SURVEY
B-88	11020-A	MOBILIZATION
B-89	11050-A	CONCRETE WASHOUT
B-90	119999-A	RECTANGULAR RAPID FLASHING BEACON (RRFB) - 2 POSTS PER LOCATION
B-91	119999-B	SOLAR POWERED SPEED FEEDBACK SIGN
ALTERNATE 1: REFER TO OPTION A ERI NOTES. ADDITIONS/CHANGES TO OPTION A NOTES ARE LISTED BELOW.		
C-1	2010-J	SUBBASE, MODIFIED 6"
C-2	7010-A	TEMPORARY PCC/HMA PAVEMENT, 7"
C-3	8030-A	TEMPORARY TRAFFIC CONTROL 1. FOR ADD ALTERNATE TEMPORARY TRAFFIC CONTROL OPTION 2. FOR ADDITIONAL TEMPORARY TRAFFIC CONTROL ITEMS NECESSARY IN ADDITION TO THE BASE BID. 3. REFER TO J SHEETS FOR DETAILS, GENERAL NOTES, AND STAGING NOTES. 4. ITEM INCLUDES THE REMOVAL OF EXISTING PAVEMENT MARKINGS, TEMPORARY PAVEMENT MARKINGS AND THE REMOVAL OF TEMPORARY PAVEMENT MARKINGS AS DETAILED ON THE J SHEETS. 5. ONLY STOP BAR TEMPORARY PAVEMENT MARKINGS SHALL BE INSTALLED ON NEWLY CONSTRUCTED PAVEMENT.
C-4	8030-X	TEMPORARY TRAFFIC SIGNALS 1. REFER TO J SHEETS FOR LOCATIONS, DETAILS, GENERAL NOTES, AND STAGING NOTES. PAYMENT WILL BE MADE UPON SUCCESSFUL INSTALLATION, OPERATION, AND REMOVAL OF THE TEMPORARY TRAFFIC SIGNAL AS APPROVED BY THE ENGINEER. 2. REFER TO AND FOLLOW IOWA DOT SPECIFICATION SECTION 2528, SECTION G.
C-5	9040-V	END OF SEASON TEMPORARY EROSION CONTROL
C-6	11020-A	MOBILIZATION

BID SET

DRAWN BY: CJ JOB DATE: 2024  
 APPROVED: BM JOB NUMBER: 2403363  
 CAD DATE: 2/13/2025 9:57:49 AM  
 CAD FILE: J:\2024\2403363\CAD\Dwgs\C\C.01.dwg

BAR IS ONE INCH ON OFFICIAL DRAWINGS.  
 IF NOT ONE INCH, ADJUST SCALE ACCORDINGLY.

NO.	DATE	BY	REVISION DESCRIPTION
1	02/13/25	DB	ADDENDUM NO. 2



BONDURANT 2ND STREET WIDENING  
 CITY OF BONDURANT  
 BONDURANT, IA

QUANTITIES AND GENERAL INFORMATION  
 ESTIMATE REFERENCE INFORMATION

SHEET NO.  
 C.04



STORM SEWER ABANDONMENT OR REMOVAL						
Location		Side	Abandonment, Plug Only or Abandonment, Plug and Fill or Removal	Bid Length	Remarks	
Road	Station to Station					
2ND STREET	17+41.55	17+41.55	RT	Removal	5.0	RP-1: 30" CMP
2ND STREET	17+42.75	17+42.75	LT	Removal	5.0	RP-2: 30" CMP
2ND STREET	25+90.21	26+75.67	LT	Removal	86.0	RP-3: 15" RCP
2ND STREET	29+11.00	30+09.28	LT	Removal	99.0	RP-4: 15" RCP
2ND STREET	29+20.11	29+91.28	RT	Removal	71.0	RP-5: 15" RCP
2ND STREET	30+28.50	30+91.48	LT	Removal	63.0	RP-6: 18" CMP
2ND STREET	30+98.58	31+64.31	LT	Removal	66.0	RP-7: 18" CMP
2ND STREET	31+70.53	32+29.16	RT	Removal	62.0	RP-8: 18" CMP
2ND STREET	32+73.08	33+01.12	RT	Removal	28.0	RP-9: 15" CMP
2ND STREET	33+05.30	34+50.44	LT	Removal	145.0	RP-10: 30" RCP
2ND STREET	33+40.08	33+66.48	RT	Removal	26.0	RP-11: 24" CMP
2ND STREET	33+94.60	34+33.27	RT	Removal	39.0	RP-12: 18" CMP
					695.0	

NOTES:  
1. REFER TO M SHEETS FOR LOCATIONS OF ABANDONMENT OR REMOVAL.

SUBDRAIN AND CLEANOUTS								
Road	Location				Type	Pipe		Remarks
	Start		End			Pipe Diam	Bid Length	
	Station	Offset FT	Station	Offset FT				
2ND STREET	15+17.12	25.2' RT	19+36.02	26.3' RT	Perforated PVC	6.0	434.0	
2ND STREET	15+17.77	26.0' LT	19+35.71	25.5' LT	Perforated PVC	6.0	433.0	
2ND STREET	19+38.73	25.5' LT	23+24.62	22.9' LT	Perforated PVC	6.0	390.0	
2ND STREET	19+39.26	26.3' RT	23+24.48	23.0' RT	Perforated PVC	6.0	391.0	
2ND STREET	24+44.25	23.0' LT	25+29.93	21.5' LT	Perforated PVC	6.0	84.0	
2ND STREET	24+44.25	23.0' RT	25+28.13	21.5' RT	Perforated PVC	6.0	83.0	
2ND STREET	25+28.13	21.5' RT	26+88.12	21.5' RT	Perforated PVC	6.0	158.0	
2ND STREET	26+88.12	21.5' RT	28+74.76	21.5' RT	Perforated PVC	6.0	185.0	
2ND STREET	28+74.76	21.5' RT	30+12.73	23.0' RT	Perforated PVC	6.0	137.0	
2ND STREET	30+12.73	23.0' RT	31+28.86	49.7' LT	Perforated PVC	6.0	136.0	
2ND STREET	31+48.14	21.5' RT	33+23.95	21.5' RT	Perforated PVC	6.0	174.0	
2ND STREET	33+23.95	21.5' RT	34+92.01	21.5' RT	Perforated PVC	6.0	165.0	
							2770.0	
SUBDRAIN CLEANOUTS:								
2ND STREET	23+24.48	23.0' RT						
2ND STREET	23+24.62	22.9' LT						
2ND STREET	24+44.25	23.0' LT						
2ND STREET	24+44.25	23.0' RT						
2ND STREET	30+12.73	23.0' RT					5.0	

NOTES:  
1. REFER TO M SHEETS FOR LOCATIONS OF SUBDRAIN AND CLEANOUTS.

X:\BIS: X\0-BASE: XC-1-BSON; X\0-ROW: X\0-AERI; X\0-AERI-INSRS11A-SF: xgl-1-dm01; X\0-AERI: XC-1-SHAD; XC-1-ALGN; XC-1-SIGN-STRIP; X\0-LITL: XC-1-STRM

BID SET

DRAWN BY: CJ	JOB DATE: 2024	BAR IS ONE INCH ON OFFICIAL DRAWINGS. 0 [redacted] 1" IF NOT ONE INCH, ADJUST SCALE ACCORDINGLY.
APPROVED: BM	JOB NUMBER: 2403363	
CAD DATE: 2/13/2025 10:56:27 AM		
CAD FILE: J:\2024\2403363\CAD\Dwgs\C\C.06.dwg		

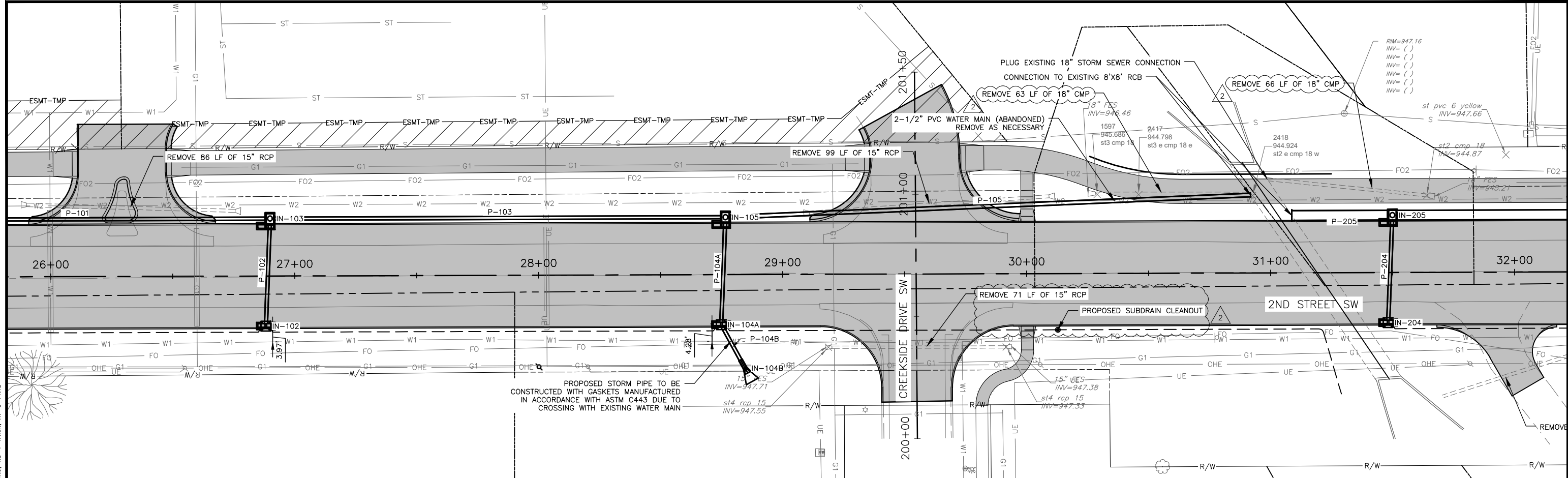
NO.	DATE	BY	REVISION DESCRIPTION
1	02/12/25	DB	ADDENDUM NO. 2



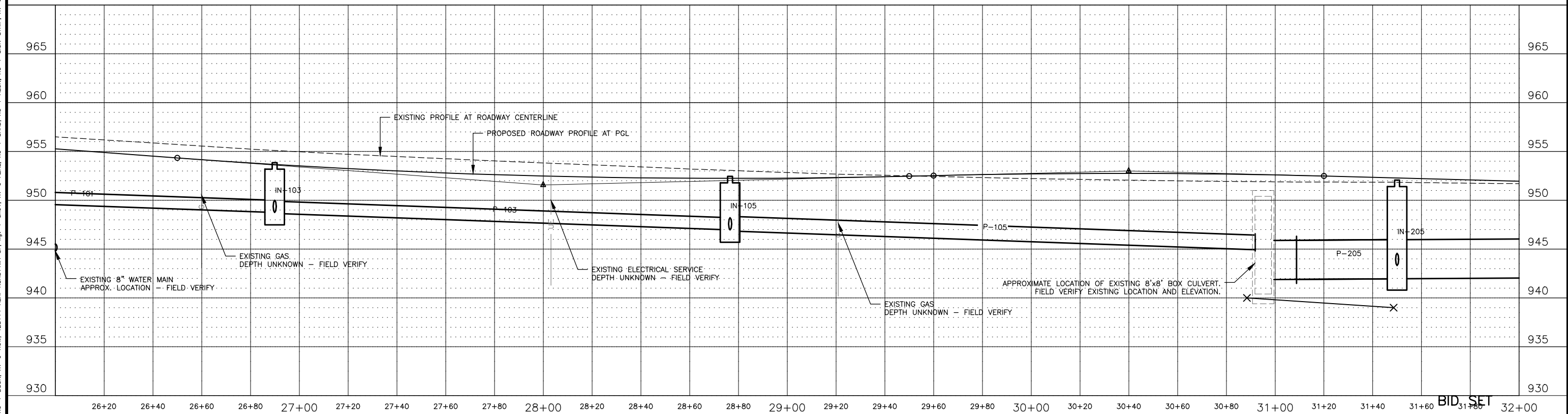
**BONDURANT 2ND STREET WIDENING**  
CITY OF BONDURANT  
BONDURANT, IA

QUANTITIES AND GENERAL INFORMATION  
**STORM SEWER TABULATIONS**

SHEET NO.  
**C.08**



1 PLAN



DRAWN BY: CJ JOB DATE: 2024  
 APPROVED: BM JOB NUMBER: 2403363  
 CAD DATE: 2/12/2025 4:28:57 PM  
 CAD FILE: J:\2024\2403363\CAD\Drawings\M.M.01.dwg

BAR IS ONE INCH ON OFFICIAL DRAWINGS.  
 IF NOT ONE INCH, ADJUST SCALE ACCORDINGLY.

NO.	DATE	BY	REVISION DESCRIPTION
1	02/13/25	DB	ADDENDUM NO. 1

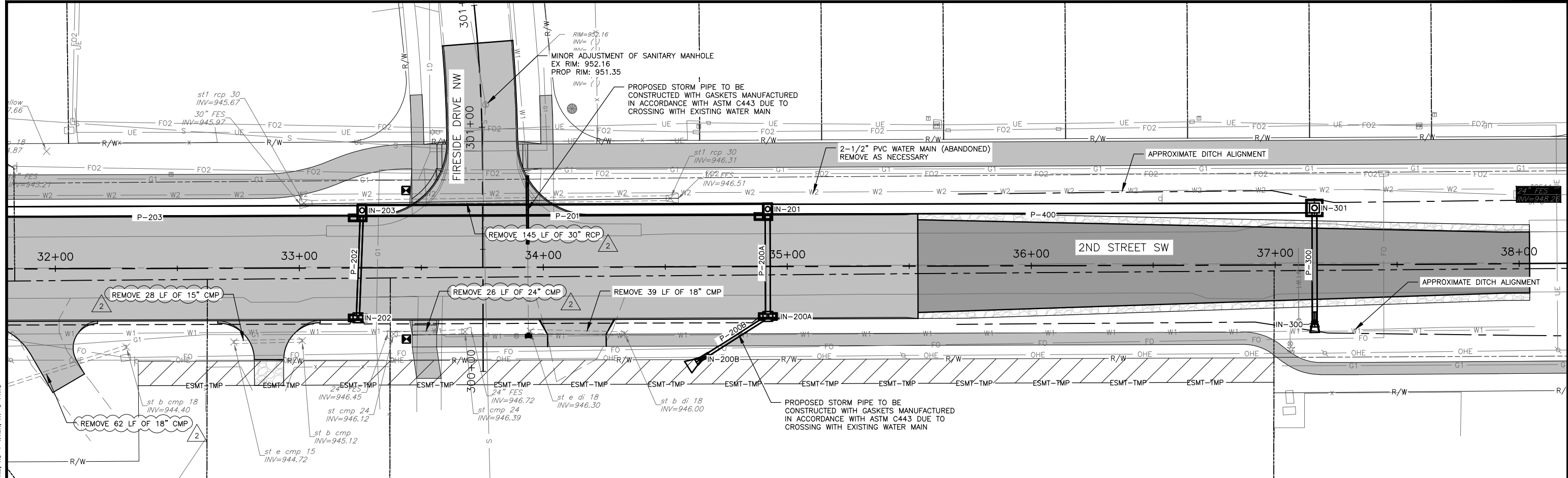


**BONDURANT 2ND STREET WIDENING**  
 CITY OF BONDURANT  
 BONDURANT, IA

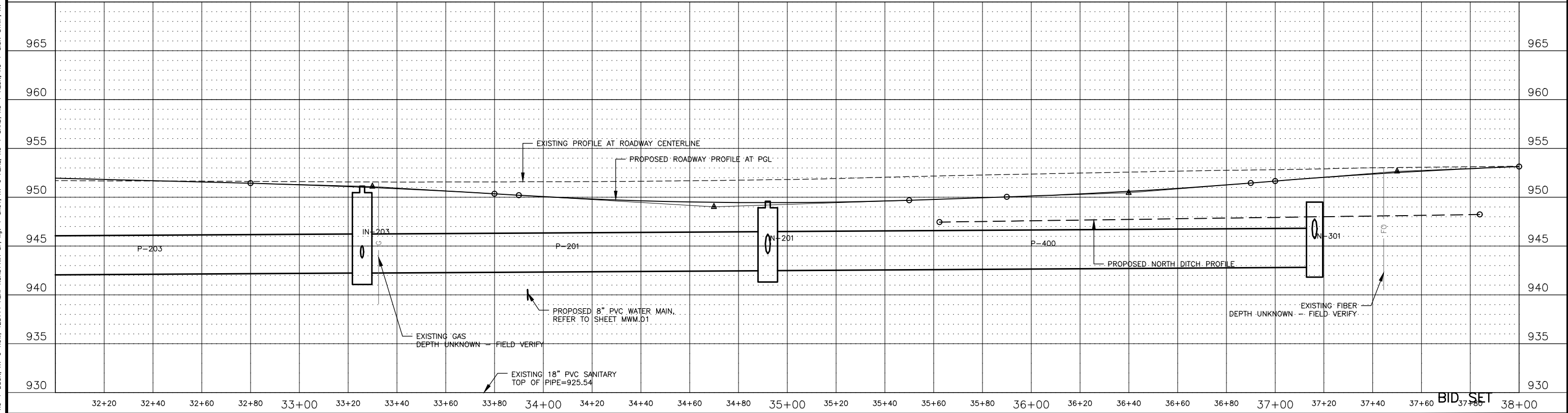
STORM SEWER PLAN AND PROFILE  
**2ND STREET PLAN AND PROFILE**

SHEET NO.  
**M.02**

Xref: XV-0-BASE; XC-1-DSON; XV-0-ROW; 428114-AERI-INSRS11.A-SF; xgl-1-dhd1; XV-0-AERL; XC-1-SHAD; XC-1-ALGN; XC-1-SIGN-STRIP; XV-0-LTL; XC-1-STRM; XC-1-WTMM; XV-0-PNVS



1 PLAN



DRAWN BY: CJ JOB DATE: 2024  
 APPROVED: BM JOB NUMBER: 2403363  
 CAD DATE: 2/12/2025 4:28:57 PM  
 CAD FILE: J:\2024\2403363\CAD\Drawings\M.M.01.dwg

BAR IS ONE INCH ON OFFICIAL DRAWINGS.  
 IF NOT ONE INCH, ADJUST SCALE ACCORDINGLY.

NO.	DATE	BY	REVISION DESCRIPTION
1	02/13/25	DB	ADDENDUM NO. 1



**BONDURANT 2ND STREET WIDENING**  
 CITY OF BONDURANT  
 BONDURANT, IA

STORM SEWER PLAN AND PROFILE  
**2ND STREET PLAN AND PROFILE**

SHEET NO.  
**M.03**

Xref: XY-0-BASE; XC-1-DSGN; XY-0-ROW; 428114-AERI-MSRST11A-SF; xgl-1-dnd1; XY-0-AERL; XC-1-SHAD; XC-1-ALGN; XC-1-SIGN-STRIP; XY-0-LITL; XC-1-STRM; XC-1-WTMM; XY-0-PNVS

BID SET